

Clamp cylinders are single acting pneumatic cylinders with built-in oleo-pneumatic intensifiers. They can be used to solve most clamping, tightening etc problems.



- Single acting cylinders with built-in hydro-pneumatic intensifier
- Compact size with large clamping forces up to 2700 daN (depending on air pressure)
- Operated using a compressed air supply, no special installation required
- Easy adjustment through a fully threaded body
- Simple and rapid installation

Operating information

| | |
|-------------------------------|--|
| Working pressure: | Max 9bar |
| except VBH603 and VBH606 : | Max 7bar |
| Permissible fluid: | Filtered (40µ) with or without lubrication |
| Standard working temperature: | +5°C to +50°C |

Hydraulic clamps

| Order code | Max.stroke (mm) | Ø external (mm) | Force at 6bar (daN) |
|------------|-----------------|-----------------|---------------------|
| VB363C | 3 | 36 | 240 |
| VB366C | 6 | 36 | 240 |
| VB369C | 9 | 36 | 240 |
| VB483C | 3 | 48 | 530 |
| VB486C | 6 | 48 | 530 |
| VB489C | 9 | 48 | 530 |
| VB4812C | 12 | 48 | 530 |
| VBH483C | 3 | 48 | 1060 |
| VB606C | 6 | 60 | 1140 |
| VB609C | 9 | 60 | 1140 |
| VB6012C | 12 | 60 | 1140 |
| VBH603C | 3 | 60 | 1800 |
| VBH606C | 6 | 60 | 1800 |

Maintenance

| | | | | | |
|-------------------|---------------|---------------|----------------|---------------|----------------|
| Seal kit for | VB Ø36 | VB Ø48 | VBH Ø48 | VB Ø60 | VBH Ø60 |
| Order code | JJVB36 | JJVB48 | JJVBH48 | JJVB60 | JJVBH60 |

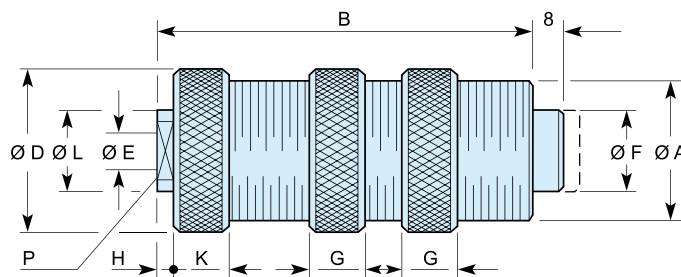
Oil container for all types of hydraulic clamp cylinders (250ml capacity) :
Order code BH680VB

Hydraulic clamp mountings

| Mounting for VB | Mounting block | Rounded end | V groove end |
|-----------------|----------------|-------------|--------------|
| Ø36 | FVA36-1 | BVA36-16 | BVA36-17 |
| Ø48 | FVA48-1 | BVA48-16 | BVA48-17 |
| Ø60 | FVA60-1 | BVA60-16 | BVA60-17 |



Dimensions (mm)



| Model No | ØA | B | ØD | ØE | ØF | G | H | K | ØL | P |
|----------|-----------|-------|----|------|----|----|---|----|----|----|
| VB363C | M36 x 1,5 | 98,0 | 42 | G1/8 | 22 | 12 | 4 | 13 | 22 | 17 |
| VB366C | M36 x 1,5 | 127,5 | 42 | G1/8 | 22 | 12 | 4 | 13 | 22 | 17 |
| VB369C | M36 x 1,5 | 185,0 | 42 | G1/8 | 22 | 12 | 4 | 13 | 22 | 17 |
| VB483C | M48 x 1,5 | 111,0 | 56 | G1/8 | 32 | 12 | 4 | 13 | 22 | 17 |
| VBH483C | M48 x 1,5 | 148,0 | 56 | G1/8 | 32 | 12 | 4 | 13 | 22 | 17 |
| VB486C | M48 x 1,5 | 148,0 | 56 | G1/8 | 32 | 12 | 4 | 13 | 22 | 17 |
| VB489C | M48 x 1,5 | 188,0 | 56 | G1/8 | 32 | 12 | 4 | 13 | 22 | 17 |
| VB4812C | M48 x 1,5 | 234,0 | 56 | G1/8 | 32 | 12 | 4 | 13 | 22 | 17 |
| VBH603C | M60 x 2 | 175,0 | 70 | G1/4 | 40 | 14 | 5 | 17 | 25 | 22 |
| VB606C | M60 x 2 | 175,0 | 70 | G1/4 | 40 | 14 | 5 | 17 | 25 | 22 |
| VBH606C | M60 x 2 | 290,0 | 70 | G1/4 | 40 | 14 | 5 | 17 | 25 | 22 |
| VB609C | M60 x 2 | 249,0 | 70 | G1/4 | 40 | 14 | 5 | 17 | 25 | 22 |
| VB6012C | M60 x 2 | 314,0 | 70 | G1/4 | 40 | 14 | 5 | 17 | 25 | 22 |



Hydrochecks

Self contained hydraulic checking units



Hydrochecks are precision built self contained hydraulic control units designed to smooth out pneumatic cylinder movements over any distance within their own stroke length, up to 450 mm.

Basic single acting models provide adjustable speed control over the full outward or inward stroke and fast return, with the facility for rapid approach to the controlled stroke by adjustment of the piston rod engaging nut.

- Gives smooth control feeds
- Strokes up to 450 mm.

