



JOU系列气源组合/JOU Series Air filter combination (FR.L)

NEW

订购码/Ordering Code

图形符号/Graphic Symbol

JO — **U** — **1/4** — **□** — **□** — **MINI**

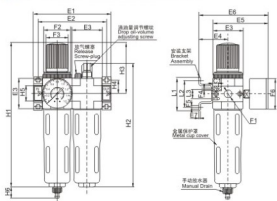
系列 JO Series
基本功能 二元件 Function code FRL Combination
接管口径 Port Size G1/8" G1/2" G1/4" G3/4" G3/8" G1"
过滤等级 Grade of filtration 空白(Blank) 40 μm 5M.5 μm
压力表 Manometer 空白(Blank) 12bar 7.7bar
尺寸 Size MINI MIDI MAXI

JOU型三元件有一个JOF型过滤减压阀和一个JOL型油雾器组合。这些元件可以分别订购。分水过滤装置能过滤空气中的液态油、冷凝水及杂质。对于特殊应用场合，5 μm滤芯可替换40 μm的标准滤芯，即使输入压力与压缩空气流量产生波动，减压阀也能保证其设定的工作压力非常稳定。
油雾器可以均匀地向压缩空气中添加油雾，其油量与空气流量成正比，并可不停气加油。可通过调节螺钉调节油量。通常每1000L空气中含有1-12滴就足够了。
The JOU consisted of JOFR and JOL, each unit can be ordered separately. The JOFR with water separator cleans the compressed air of fluid oil, condensation and dirt particles. For special application the standard 40um filter element may easily be replaced by a 5um filter element. The JOFR maintain inputting constant operating pressure despite fluctuation in line pressure and the amount of air consumed.
The proportional lubricator adds a regulated quantity of oil to the filtered air. The oil-mist content proportional to the flow and oil can be added during operation. The oil drip rate is controlled by the adjustable bolt. Normally, 10-12 drops/100L of the air is sufficient.

规格/Specifications

| 气源组合/Air filter combination | MINI | MIDI | MAXI |
|--|---|-----------------|--------------------|
| 工作压力(Working pressure): 12bar/40um | JOU-1.8-MINI | JOU-3.8-MINI | JOU-1.8-MAXI |
| 工作压力(Working pressure): 7bar/6um | JOU-1.8-7-MINI | JOU-3.8-7-MINI | JOU-1.8-7-MAXI |
| 工作压力(Working pressure): 12bar/5 μm | JOU-1.8-5M-MINI | JOU-3.8-5M-MINI | JOU-1.8-5M-MAXI |
| Manometer | OMA-40-16-18 | OMA-50-16-14 | OMA-50-10-14 |
| 工作介质的 Medium | 压缩空气 / Compressed air | | |
| 结构特点 Features of structure | 带水分分离器的结构式过滤器; 膜片式减压阀; 活塞式减压阀; 油雾型自动可变节流式 Sintered filter with water separator; Membrane type regulator; Direct constant-density lubricator | | |
| 安装位置 Mounting position | 管式安装或支架安装 / Pipe mounting or foot mounting | | |
| 连接尺寸 Connection | G1/8" | G1/4" | G3/8" |
| 标准额定流量 Standard nominal flow rate | 700 | 1000 | 1200 |
| 输入压力 Primary pressure | 1-16bar | 1.5-12bar | 0.5-12bar/0.5-7bar |
| 最大标准流量 Max. Standard nominal flow rate | 3 L/min | 6 L/min | 10 L/min |
| 过滤精度 Grade of filtration | 40um/5um | | |
| 最大容量 Max. Capacity of condensate fluid | 22ml | | |
| 温度范围 Temperature range | 0-60℃ | | |
| 材料 Material | 壳体: 压铸铝; 过滤器和油杯: PC; 金属保护罩: 铝合金; 密封: 丁腈橡胶; 调压手柄: POM Housing: Zinc die-casting; Filter bowl and oil bowl: PC; Metal bowl guard: Aluminium alloy; Sealing: NBR; Adjusting knob: POM | | |

外形尺寸图/Main Dimensions(mm)



规格/Specifications

| 型号/Model | E1 | E2 | E3 | E4 | E5 | E6 | E7 | F1 | F2 |
|-------------|---------|---------|----|----|-----|-----|----|---------------------|-----------|
| JOU...-MINI | 104 | 92 | 40 | 39 | 76 | 95 | 2 | G1/8", G1/4", G3/8" | M36 × 1.5 |
| JOU...-MIDI | 140 | 125 | 55 | 47 | 93 | 112 | 3 | G1/8", G1/2", G3/4" | M52 × 1.5 |
| JOU...-MAXI | 182/182 | 146/157 | 66 | 53 | 104 | 124 | 3 | G3/4", G1" | M36 × 1.5 |

| 型号/Model | F3 | F4 | F5 | F6 | L1 | L2 | L3 | H1 | H2 | H3 | H4 | H5 | H6 |
|-------------|----|----|-----|----|----|----|----|-----|-----|----|------|--------|----|
| JOU...-MINI | 31 | M4 | 4.5 | 40 | 44 | 35 | 11 | 194 | 169 | 69 | 17.5 | 20 | 15 |
| JOU...-MIDI | 50 | M5 | 5.5 | 52 | 71 | 60 | 22 | 250 | 206 | 97 | 24.5 | 32 | 15 |
| JOU...-MAXI | 31 | M5 | 5.5 | 63 | 71 | 60 | 22 | 252 | 223 | 80 | 24.5 | 32, 40 | 15 |

JOFR系列过滤减压阀/JOFR Series Filter & Regulator

NEW

订购码/Ordering Code

图形符号/Graphic Symbol

JO — **FR** — **1/4** — **□** — **□** — **MINI**

系列 JO Series
基本功能 过滤减压阀 Function code Filter & Regulator
接管口径 Port Size G1/8" G1/2" G1/4" G3/4" G3/8" G1"
过滤等级 Grade of filtration 空白(Blank) 40um 5M.5um
压力表 Manometer 空白(Blank) 12bar 7.7bar
尺寸 Size MINI MIDI MAXI

过滤器和减压阀组成一个单独的设置。能过滤空气中的液态油、冷凝水及杂质。对于特殊应用场合，5 μm滤芯可替换40 μm的标准滤芯，即使输入压力与压缩空气流量产生波动，减压阀也能保证其设定的工作压力非常稳定。
Filter and pressure regulator combine a single unit, and cleans the compressed air of fluid oil, condensation and dirt particles. For special application the standard 40um filter element may easily be replaced by a 5um filter element.
The JOFR maintain inputting constant operating pressure despite fluctuation in line pressure and the amount of air consumed.

规格/Specifications

| 过滤减压阀/Filter & Regulators | MINI | MIDI | MAXI |
|--|--|------------------|------------------|
| 工作压力(Working pressure): 12bar/40um | JOFR-1.8-MINI | JOFR-3.8-MINI | JOFR-1.8-MAXI |
| 工作压力(Working pressure): 7bar/6um | JOFR-1.8-7-MINI | JOFR-3.8-7-MINI | JOFR-1.8-7-MAXI |
| 工作压力(Working pressure): 12bar/5 μm | JOFR-1.8-5M-MINI | JOFR-3.8-5M-MINI | JOFR-1.8-5M-MAXI |
| Manometer | OMA-40-16-18 | OMA-50-16-14 | OMA-50-10-14 |
| 工作介质的 Medium | 压缩空气 / Compressed air | | |
| 结构特点 Features of structure | 带水分分离器的结构式过滤器; MINI/MIDI膜片式减压阀; MAXI活塞式减压阀; Sintered filter with water separator; MINI/MIDI Membrane type regulator; MAXI Piston regulator | | |
| 安装位置 Mounting position | 管式安装或支架安装 / Pipe mounting or foot mounting | | |
| 连接尺寸 Connection | G1/8" | G1/4" | G3/8" |
| 标准额定流量 Standard nominal flow rate | JOFR... 750 | 1400 | 1600 |
| 输入压力 Primary pressure | JOFR...-7 900 | 1500 | 1700 |
| 最大标准流量 Max. Standard nominal flow rate | JOFR...-5M 650 | 1200 | 1350 |
| 工作介质的 Medium | 压缩空气 / Compressed air | | |
| 结构特点 Features of structure | 带水分分离器的结构式过滤器; MINI/MIDI膜片式减压阀; MAXI活塞式减压阀; Sintered filter with water separator; MINI/MIDI Membrane type regulator; MAXI Piston regulator | | |
| 安装位置 Mounting position | 管式安装或支架安装 / Pipe mounting or foot mounting | | |
| 连接尺寸 Connection | G1/8" | G1/4" | G3/8" |
| 标准额定流量 Standard nominal flow rate | JOFR... 750 | 1400 | 1600 |
| 输入压力 Primary pressure | JOFR...-7 900 | 1500 | 1700 |
| 最大标准流量 Max. Standard nominal flow rate | JOFR...-5M 650 | 1200 | 1350 |
| 工作介质的 Medium | 压缩空气 / Compressed air | | |
| 结构特点 Features of structure | 带水分分离器的结构式过滤器; MINI/MIDI膜片式减压阀; MAXI活塞式减压阀; Sintered filter with water separator; MINI/MIDI Membrane type regulator; MAXI Piston regulator | | |
| 安装位置 Mounting position | 管式安装或支架安装 / Pipe mounting or foot mounting | | |
| 连接尺寸 Connection | G1/8" | G1/4" | G3/8" |
| 标准额定流量 Standard nominal flow rate | JOFR... 750 | 1400 | 1600 |
| 输入压力 Primary pressure | JOFR...-7 900 | 1500 | 1700 |
| 最大标准流量 Max. Standard nominal flow rate | JOFR...-5M 650 | 1200 | 1350 |
| 工作介质的 Medium | 压缩空气 / Compressed air | | |
| 结构特点 Features of structure | 带水分分离器的结构式过滤器; MINI/MIDI膜片式减压阀; MAXI活塞式减压阀; Sintered filter with water separator; MINI/MIDI Membrane type regulator; MAXI Piston regulator | | |
| 安装位置 Mounting position | 管式安装或支架安装 / Pipe mounting or foot mounting | | |
| 连接尺寸 Connection | G1/8" | G1/4" | G3/8" |
| 标准额定流量 Standard nominal flow rate | JOFR... 750 | 1400 | 1600 |
| 输入压力 Primary pressure | JOFR...-7 900 | 1500 | 1700 |
| 最大标准流量 Max. Standard nominal flow rate | JOFR...-5M 650 | 1200 | 1350 |
| 工作介质的 Medium | 压缩空气 / Compressed air | | |
| 结构特点 Features of structure | 带水分分离器的结构式过滤器; MINI/MIDI膜片式减压阀; MAXI活塞式减压阀; Sintered filter with water separator; MINI/MIDI Membrane type regulator; MAXI Piston regulator | | |
| 安装位置 Mounting position | 管式安装或支架安装 / Pipe mounting or foot mounting | | |
| 连接尺寸 Connection | G1/8" | G1/4" | G3/8" |
| 标准额定流量 Standard nominal flow rate | JOFR... 750 | 1400 | 1600 |
| 输入压力 Primary pressure | JOFR...-7 900 | 1500 | 1700 |
| 最大标准流量 Max. Standard nominal flow rate | JOFR...-5M 650 | 1200 | 1350 |
| 工作介质的 Medium | 压缩空气 / Compressed air | | |
| 结构特点 Features of structure | 带水分分离器的结构式过滤器; MINI/MIDI膜片式减压阀; MAXI活塞式减压阀; Sintered filter with water separator; MINI/MIDI Membrane type regulator; MAXI Piston regulator | | |
| 安装位置 Mounting position | 管式安装或支架安装 / Pipe mounting or foot mounting | | |
| 连接尺寸 Connection | G1/8" | G1/4" | G3/8" |
| 标准额定流量 Standard nominal flow rate | JOFR... 750 | 1400 | 1600 |
| 输入压力 Primary pressure | JOFR...-7 900 | 1500 | 1700 |
| 最大标准流量 Max. Standard nominal flow rate | JOFR...-5M 650 | 1200 | 1350 |
| 工作介质的 Medium | 压缩空气 / Compressed air | | |
| 结构特点 Features of structure | 带水分分离器的结构式过滤器; MINI/MIDI膜片式减压阀; MAXI活塞式减压阀; Sintered filter with water separator; MINI/MIDI Membrane type regulator; MAXI Piston regulator | | |
| 安装位置 Mounting position | 管式安装或支架安装 / Pipe mounting or foot mounting | | |
| 连接尺寸 Connection | G1/8" | G1/4" | G3/8" |
| 标准额定流量 Standard nominal flow rate | JOFR... 750 | 1400 | 1600 |
| 输入压力 Primary pressure | JOFR...-7 900 | 1500 | 1700 |
| 最大标准流量 Max. Standard nominal flow rate | JOFR...-5M 650 | 1200 | 1350 |
| 工作介质的 Medium | 压缩空气 / Compressed air | | |
| 结构特点 Features of structure | 带水分分离器的结构式过滤器; MINI/MIDI膜片式减压阀; MAXI活塞式减压阀; Sintered filter with water separator; MINI/MIDI Membrane type regulator; MAXI Piston regulator | | |
| 安装位置 Mounting position | 管式安装或支架安装 / Pipe mounting or foot mounting | | |
| 连接尺寸 Connection | G1/8" | G1/4" | G3/8" |
| 标准额定流量 Standard nominal flow rate | JOFR... 750 | 1400 | 1600 |
| 输入压力 Primary pressure | JOFR...-7 900 | 1500 | 1700 |
| 最大标准流量 Max. Standard nominal flow rate | JOFR...-5M 650 | 1200 | 1350 |
| 工作介质的 Medium | 压缩空气 / Compressed air | | |
| 结构特点 Features of structure | 带水分分离器的结构式过滤器; MINI/MIDI膜片式减压阀; MAXI活塞式减压阀; Sintered filter with water separator; MINI/MIDI Membrane type regulator; MAXI Piston regulator | | |
| 安装位置 Mounting position | 管式安装或支架安装 / Pipe mounting or foot mounting | | |
| 连接尺寸 Connection | G1/8" | G1/4" | G3/8" |
| 标准额定流量 Standard nominal flow rate | JOFR... 750 | 1400 | 1600 |
| 输入压力 Primary pressure | JOFR...-7 900 | 1500 | 1700 |
| 最大标准流量 Max. Standard nominal flow rate | JOFR...-5M 650 | 1200 | 1350 |
| 工作介质的 Medium | 压缩空气 / Compressed air | | |
| 结构特点 Features of structure | 带水分分离器的结构式过滤器; MINI/MIDI膜片式减压阀; MAXI活塞式减压阀; Sintered filter with water separator; MINI/MIDI Membrane type regulator; MAXI Piston regulator | | |
| 安装位置 Mounting position | 管式安装或支架安装 / Pipe mounting or foot mounting | | |
| 连接尺寸 Connection | G1/8" | G1/4" | G3/8" |
| 标准额定流量 Standard nominal flow rate | JOFR... 750 | 1400 | 1600 |
| 输入压力 Primary pressure | JOFR...-7 900 | 1500 | 1700 |
| 最大标准流量 Max. Standard nominal flow rate | JOFR...-5M 650 | 1200 | 1350 |
| 工作介质的 Medium | 压缩空气 / Compressed air | | |
| 结构特点 Features of structure | 带水分分离器的结构式过滤器; MINI/MIDI膜片式减压阀; MAXI活塞式减压阀; Sintered filter with water separator; MINI/MIDI Membrane type regulator; MAXI Piston regulator | | |
| 安装位置 Mounting position | 管式安装或支架安装 / Pipe mounting or foot mounting | | |
| 连接尺寸 Connection | G1/8" | G1/4" | G3/8" |
| 标准额定流量 Standard nominal flow rate | JOFR... 750 | 1400 | 1600 |
| 输入压力 Primary pressure | JOFR...-7 900 | 1500 | 1700 |
| 最大标准流量 Max. Standard nominal flow rate | JOFR...-5M 650 | 1200 | 1350 |
| 工作介质的 Medium | 压缩空气 / Compressed air | | |
| 结构特点 Features of structure | 带水分分离器的结构式过滤器; MINI/MIDI膜片式减压阀; MAXI活塞式减压阀; Sintered filter with water separator; MINI/MIDI Membrane type regulator; MAXI Piston regulator | | |
| 安装位置 Mounting position | 管式安装或支架安装 / Pipe mounting or foot mounting | | |
| 连接尺寸 Connection | G1/8" | G1/4" | G3/8" |
| 标准额定流量 Standard nominal flow rate | JOFR... 750 | 1400 | 1600 |
| 输入压力 Primary pressure | JOFR...-7 900 | 1500 | 1700 |
| 最大标准流量 Max. Standard nominal flow rate | JOFR...-5M 650 | 1200 | 1350 |
| 工作介质的 Medium | 压缩空气 / Compressed air | | |
| 结构特点 Features of structure | 带水分分离器的结构式过滤器; MINI/MIDI膜片式减压阀; MAXI活塞式减压阀; Sintered filter with water separator; MINI/MIDI Membrane type regulator; MAXI Piston regulator | | |
| 安装位置 Mounting position | 管式安装或支架安装 / Pipe mounting or foot mounting | | |
| 连接尺寸 Connection | G1/8" | G1/4" | G3/8" |
| 标准额定流量 Standard nominal flow rate | JOFR... 750 | 1400 | 1600 |
| 输入压力 Primary pressure | JOFR...-7 900 | 1500 | 1700 |
| 最大标准流量 Max. Standard nominal flow rate | JOFR...-5M 650 | 1200 | 1350 |
| 工作介质的 Medium | 压缩空气 / Compressed air | | |
| 结构特点 Features of structure | 带水分分离器的结构式过滤器; MINI/MIDI膜片式减压阀; MAXI活塞式减压阀; Sintered filter with water separator; MINI/MIDI Membrane type regulator; MAXI Piston regulator | | |
| 安装位置 Mounting position | 管式安装或支架安装 / Pipe mounting or foot mounting | | |
| 连接尺寸 Connection | G1/8" | G1/4" | G3/8" |
| 标准额定流量 Standard nominal flow rate | JOFR... 750 | 1400 | 1600 |
| 输入压力 Primary pressure | JOFR...-7 900 | 1500 | 1700 |
| 最大标准流量 Max. Standard nominal flow rate | JOFR...-5M 650 | 1200 | 1350 |
| 工作介质的 Medium | 压缩空气 / Compressed air | | |
| 结构特点 Features of structure | 带水分分离器的结构式过滤器; MINI/MIDI膜片式减压阀; MAXI活塞式减压阀; Sintered filter with water separator; MINI/MIDI Membrane type regulator; MAXI Piston regulator | | |
| 安装位置 Mounting position | 管式安装或支架安装 / Pipe mounting or foot mounting | | |
| 连接尺寸 Connection | G1/8" | G1/4" | G3/8" |
| 标准额定流量 Standard nominal flow rate | JOFR... 750 | 1400 | 1600 |
| 输入压力 Primary pressure | JOFR...-7 900 | 1500 | 1700 |
| 最大标准流量 Max. Standard nominal flow rate | JOFR...-5M 650 | 1200 | 1350 |
| 工作介质的 Medium | 压缩空气 / Compressed air | | |
| 结构特点 Features of structure | 带水分分离器的结构式过滤器; MINI/MIDI膜片式减压阀; MAXI活塞式减压阀; Sintered filter with water separator; MINI/MIDI Membrane type regulator; MAXI Piston regulator | | |
| 安装位置 Mounting position | 管式安装或支架安装 / Pipe mounting or foot mounting | | |
| 连接尺寸 Connection | G1/8" | G1/4" | G3/8" |
| 标准额定流量 Standard nominal flow rate | JOFR... 750 | 1400 | 1600 |
| 输入压力 Primary pressure | JOFR...-7 900 | 1500 | 1700 |
| 最大标准流量 Max. Standard nominal flow rate | JOFR...-5M 650 | 1200 | 1350 |
| 工作介质的 Medium | 压缩空气 / Compressed air | | |
| 结构特点 Features of structure | 带水分分离器的结构式过滤器; MINI/MIDI膜片式减压阀; MAXI活塞式减压阀; Sintered filter with water separator; MINI/MIDI Membrane type regulator; MAXI Piston regulator | | |
| 安装位置 Mounting position | 管式安装或支架安装 / Pipe mounting or foot mounting | | |
| 连接尺寸 Connection | G1/8" | G1/4" | G3/8" |
| 标准额定流量 Standard nominal flow rate | JOFR... 750 | 1400 | 1600 |
| 输入压力 Primary pressure | JOFR...-7 900 | 1500 | 1700 |
| 最大标准流量 Max. Standard nominal flow rate | JOFR...-5M 650 | 1200 | 1350 |
| 工作介质的 Medium | 压缩空气 / Compressed air | | |
| 结构特点 Features of structure | 带水分分离器的结构式过滤器; MINI/MIDI膜片式减压阀; MAXI活塞式减压阀; Sintered filter with water separator; MINI/MIDI Membrane type regulator; MAXI Piston regulator | | |
| 安装位置 Mounting position | 管式安装或支架安装 / Pipe mounting or foot mounting | | |
| 连接尺寸 Connection | G1/8" | G1/4" | G3/8" |
| 标准额定流量 Standard nominal flow rate | JOFR... 750 | 1400 | 1600 |
| 输入压力 Primary pressure | JOFR...-7 900 | 1500 | 1700 |
| 最大标准流量 Max. Standard nominal flow rate | JOFR...-5M 650 | 1200 | 1350 |
| 工作介质的 Medium | 压缩空气 / Compressed air | | |
| 结构特点 Features of structure | 带水分分离器的结构式过滤器; MINI/MIDI膜片式减压阀; MAXI活塞式减压阀; Sintered filter with water separator; MINI/MIDI Membrane type regulator; MAXI Piston regulator | | |
| 安装位置 Mounting position | 管式安装或支架安装 / Pipe mounting or foot mounting | | |
| 连接尺寸 Connection | G1/8" | G1/4" | G3/8" |
| 标准额定流量 Standard nominal flow rate | JOFR... 750 | 1400 | 1600 |
| 输入压力 Primary pressure | JOFR...-7 900 | 1500 | 1700 |
| 最大标准流量 Max. Standard nominal flow rate | JOFR...-5M 650 | 1200 | 1350 |
| 工作介质的 Medium | 压缩空气 / Compressed air | | |
| 结构特点 Features of structure | 带水分分离器的结构式过滤器; MINI/MIDI膜片式减压阀; MAXI活塞式减压阀; Sintered filter with water separator; MINI/MIDI Membrane type regulator; MAXI Piston regulator | | |
| 安装位置 Mounting position | 管式安装或支架安装 / Pipe mounting or foot mounting | | |
| 连接尺寸 Connection | G1/8" | G1/4" | G3/8" |
| 标准额定流量 Standard nominal flow rate | JOFR... 750 | 1400 | 1600 |
| 输入压力 Primary pressure | JOFR...-7 900 | 1500 | 1700 |
| 最大标准流量 Max. Standard nominal flow rate | JOFR...-5M 650 | 1200 | 1350 |
| 工作介质的 Medium | 压缩空气 / Compressed air | | |
| 结构特点 Features of structure | 带水分分离器的结构式过滤器; MINI/MIDI膜片式减压阀; MAXI活塞式减压阀; Sintered filter with water separator; MINI/MIDI Membrane type regulator; MAXI Piston regulator | | |
| 安装位置 Mounting position | 管式安装或支架安装 / Pipe mounting or foot mounting | | |
| 连接尺寸 Connection | G1/8" | G1/4" | G3/8" |
| 标准额定流量 Standard nominal flow rate | JOFR... 750 | 1400 | 1600 |
| 输入压力 Primary pressure | JOFR...-7 900 | 1500 | 1700 |
| 最大标准流量 Max. Standard nominal flow rate | JOFR...-5M 650 | 1200 | 1350 |
| 工作介质的 Medium | 压缩空气 / Compressed air | | |
| 结构特点 Features of structure | 带水分分离器的结构式过滤器; MINI/MIDI膜片式减压阀; MAXI活塞式减压阀; Sintered filter with water separator; MINI/MIDI Membrane type regulator; MAXI Piston regulator | | |
| 安装位置 Mounting position | 管式安装或支架安装 / Pipe mounting or foot mounting | | |
| 连接尺寸 Connection | G1/8" | G1/4" | G3/8" |
| 标准额定流量 Standard nominal flow rate | JOFR... 750 | 1400 | 1600 |
| 输入压力 Primary pressure | JOFR...-7 900 | 1500 | 1700 |
| 最大标准流量 Max. Standard nominal flow rate | JOFR...-5M 650 | 1200 | 1350 |
| 工作介质的 Medium | 压缩空气 / Compressed air | | |
| 结构特点 Features of structure | 带水分分离器的结构式过滤器; MINI/MIDI膜片式减压阀; MAXI活塞式减压阀; Sintered filter with water separator; MINI/MIDI Membrane type regulator; MAXI Piston regulator | | |
| 安装位置 Mounting position | 管式安装或支架安装 / Pipe mounting or foot mounting | | |
| 连接尺寸 Connection | G1/8" | G1/4" | G3/8" |
| 标准额定流量 Standard nominal flow rate | JOFR... 750 | 1400 | 1600 |
| 输入压力 Primary pressure | JOFR...-7 900 | 1500 | 1700 |
| 最大标准流量 Max. Standard nominal flow rate | JOFR...-5M 650 | 1200 | 1350 |
| 工作介质的 Medium | 压缩空气 / Compressed air | | |
| 结构特点 Features of structure | 带水分分离器的结构式过滤器; MINI/MIDI膜片式减压阀; MAXI活塞式减压阀; Sintered filter with water separator; MINI/MIDI Membrane type regulator; MAXI Piston regulator | | |
| 安装位置 Mounting position | 管式安装或支架安装 / Pipe mounting or foot mounting | | |
| 连接尺寸 Connection | G1/8" | G1/4" | G3/8" |
| 标准额定流量 Standard nominal flow rate | JOFR... 750 | 1400 | 1600 |
| 输入压力 Primary pressure | JOFR...-7 900 | 1500 | 1700 |
| 最大标准流量 Max. Standard nominal flow rate | JOFR...-5M 650 | 1200 | 1350 |
| 工作介质的 Medium | 压缩空气 / Compressed air | | |
| 结构特点 Features of structure | 带水分分离器的结构式过滤器; MINI/MIDI膜片式减压阀; MAXI活塞式减压阀; Sintered filter with water separator; MINI/MIDI Membrane type regulator; MAXI Piston regulator | | |
| 安装位置 Mounting position | 管式安装或支架安装 / Pipe mounting or foot mounting | | |
| 连接尺寸 Connection | G1/8" | G1/4" | G3/8" |
| 标准额定流量 Standard nominal flow rate | JOFR... 750 | 1400 | 1600 |
| 输入压力 Primary pressure | JOFR...-7 900 | 1500 | 1700 |
| 最大标准流量 Max. Standard nominal flow rate | JOFR...-5M 650 | 1200 | 1350 |
| 工作介质的 Medium | 压缩空气 / Compressed air | | |
| 结构特点 Features of structure | 带水分分离器的结构式过滤器; MINI/MIDI膜片式减压阀; MAXI活塞式减压阀; Sintered filter with water separator; MINI/MIDI Membrane type regulator; MAXI Piston regulator | | |



JOR系列减压阀/JOR Series Regulator



订购码/Ordering Code

图形符号/Graphic Symbol

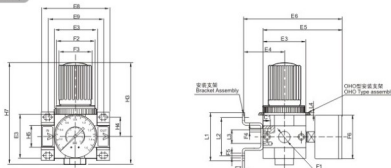


即使输入压力与压缩空气消耗生产系统波动, 减压阀也能保证其设定的工作压力非常稳定。
The JOR maintain inputting constant operating pressure despite fluctuation in line pressure and the amount of air consumed.

规格/Specifications

| 稳压器/Regulators | MINI | | | MIDI | | | MAXI | | |
|-------------------------------------|---|---------------|---------------|---------------|---------------|---------------|---------------|-------------|--|
| 工作压力 / Working pressure 12bar | JOR-1/8-MINI | JOR-1/4-MINI | JOR-3/8-MINI | JOR-3/8-MIDI | JOR-1/2-MIDI | JOR-3/4-MIDI | JOR-3/4-MAXI | JOR-1-MAXI | |
| 工作压力 / Working pressure 7bar | JOR-1/8-7MINI | JOR-1/4-7MINI | JOR-3/8-7MINI | JOR-3/8-7MIDI | JOR-1/2-7MIDI | JOR-3/4-7MIDI | JOR-3/4-7MAXI | JOR-1-7MAXI | |
| Manometer | 0-12bar | | | OMA-40-16-1/8 | | | OMA-50-16-1/4 | | |
| | 0-7bar | | | OMA-40-10-1/8 | | | OMA-50-10-1/4 | | |
| 工作介质 / Medium | 过滤压缩空气(华油或未华油) / Filtered compressed air(lubricated or unlubricated) | | | | | | | | |
| 结构特点 / Features of structure | MINI/MIDI: 膜片式减压阀(Diaphragm type regulator); MAXI: 活塞式减压阀(Piston regulator) | | | | | | | | |
| 安装方式 / Mounting type | 管式安装, 支架安装或面板式安装(Pipe/foot/Plate mounting) | | | | | | | | |
| 安装位置 / Assembly position | 任意 / Any | | | | | | | | |
| 连接尺寸 / Connection | G1/8" | G1/4" | G3/8" | G3/8" | G1/2" | G3/4" | G3/4" | G1" | |
| 标准额定流量 / Standard nominal flow rate | JOR-... 800 | 1500 | 1700 | 3200 | 3500 | 3500 | 11000 | 11500 | |
| 输入压力 / Primary pressure | 1-16bar | | | | | | | | |
| 工作温度 / Temperature range | 0-60°C | | | | | | | | |
| 材料 / Material | 壳体: 压铸铝; 过滤器和油杯: 密封; 丁腈橡胶; 调压手轮: POM Housing: Zinc die-casting; Filter bowl and oil bowl Sealing: NBR; Adjusting knob: POM | | | | | | | | |

外形尺寸图/Main Dimensions(mm)



规格/Specifications

| 型号/Model | E3 | E4 | E5 | E6 | E9 | F1 | F2 | F3 | F4 | F5 | F6 | L1 | L2 | L3 | L4 | H1 | H4 | H7 | |
|------------|----|----|-----|-----|---------|--------|---------------------|---------|----|----|-----|----|----|----|----|-------|----|------|----|
| JOR...MINI | 40 | 39 | 76 | 95 | 64 | 52 | G1/8", G1/4", G3/8" | M36×1.5 | 31 | M4 | 4.5 | 40 | 44 | 35 | 11 | Max.3 | 69 | 17.5 | 96 |
| JOR...MIDI | 55 | 47 | 93 | 112 | 85 | 70 | G1/8", G1/2", G3/4" | M52×1.5 | 50 | M5 | 5.5 | 52 | 71 | 60 | 22 | Max.5 | 98 | 24.5 | 96 |
| JOR...MAXI | 66 | 53 | 104 | 124 | 96, 116 | 80, 91 | G3/4", G1" | M36×1.5 | 31 | M5 | 5.5 | 63 | 71 | 60 | 22 | Max.4 | 80 | 24.5 | 96 |

JOF系列空气过滤器/JOF Series Air Filter



订购码/Ordering Code

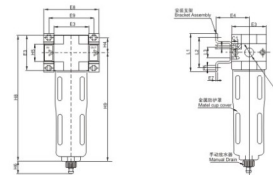


分水过滤器能过滤空气中的液态油、冷凝水及杂质。对于特殊应用场合, 5μm滤芯容易替换40μm标准滤芯。
The JOF with water separator cleans the compressed air of fluid oil condensation and dirt particles for special application, the standard 40μm filter element may easily be replaced by a 5μm filter element.

规格/Specifications

| 过滤器/Filter | MINI | | | MIDI | | | MAXI | | |
|-------------------------------------|---|----------------|----------------|----------------|----------------|----------------|---------------|-------------|--|
| 40μm | JOF-1/8-MINI | JOF-1/4-MINI | JOF-3/8-MINI | JOF-3/8-MIDI | JOF-1/2-MIDI | JOF-3/4-MIDI | JOF-3/4-MAXI | JOF-1-MAXI | |
| 5μm | JOF-1/8-5MMINI | JOF-1/4-5MMINI | JOF-3/8-5MMINI | JOF-3/8-5MMIDI | JOF-1/2-5MMIDI | JOF-3/4-5MMIDI | JOF-3/4-5MAXI | JOF-1-5MAXI | |
| 工作介质 / Medium | 压缩空气 / Compressed air | | | | | | | | |
| 结构特点 / Features of structure | 带水分离器的烧结式过滤器 / Sintered filter with water separator | | | | | | | | |
| 安装方式 / Mounting type | 管式安装或支架安装 / Pipe mounting or foot mounting | | | | | | | | |
| 安装位置 / Assembly position | 垂直方向 / Vertical ±5° | | | | | | | | |
| 连接尺寸 / Connection | G1/8" | G1/4" | G3/8" | G3/8" | G1/2" | G3/4" | G3/4" | G1" | |
| 标准额定流量 / Standard nominal flow rate | OF-... 600 | 1200 | 1400 | 2700 | 3000 | 3000 | 5000 | 5300 | |
| 输入压力 / Primary pressure | 1-16bar | | | | | | | | |
| 过滤精度 / Grade of filtration | 40μm/5μm | | | | | | | | |
| 最大过滤容量 / Max condensate capacity | 22ml | | | | | | | | |
| 温度范围 / Temperature range | 0-60°C | | | | | | | | |
| 材料 / Material | 壳体: 压铸铝; 过滤器和油杯: PC; 金属保护罩: 铝合金; 密封: 丁腈橡胶 Housing: Zinc die-casting; Filter bowl and oil bowl: PC; Metal guard: Aluminum alloy; Sealing: NBR | | | | | | | | |

外形尺寸图/Main Dimensions(mm)



规格/Specifications

| 型号/Model | E3 | E4 | E7 | E9 | F1 | F4 | F5 | L1 | L2 | L3 | H1 | H5 | H8 | H9 |
|------------|----|----|----|---------|--------|---------------------|----|-----|----|----|----|------|--------|----|
| JOF...MINI | 40 | 39 | 2 | 64 | 52 | G1/8", G1/4", G3/8" | M4 | 4.5 | 44 | 35 | 11 | 17.5 | 20 | 15 |
| JOF...MIDI | 55 | 47 | 3 | 85 | 70 | G1/8", G1/2", G3/4" | M5 | 5.5 | 71 | 60 | 22 | 24.5 | 32 | 15 |
| JOF...MAXI | 66 | 53 | 3 | 96, 116 | 80, 91 | G3/4", G1" | M5 | 5.5 | 71 | 60 | 22 | 24.5 | 32, 40 | 15 |



JOL系列油雾器/JOL Series Lubricator



订购码/Ordering Code

图形符号/Graphic Symbol

JO — **L** — **1/4** — **MINI**

系列 JO 系列
Series JO Series

基本功能 油雾器
Function code Lubricator

接口口径
Port Size
G1/8" G1/2"
G3/8" G1"

尺寸
Size
MINI
MIDI
MAXI

自动可变式油雾器可均匀地向压缩空气喷油。一个调节器保证了油雾量与压缩空气流量成正比。压缩空气经过滤时产生自热，迫使油滴从油杯流入油流道，阻止空气进入入口，同时雾化。可在工作时实现不停气加油。

The direct constant-density lubricator add regulated quantity of oil to the compressed air. A valve maintains oil mist content proportional to the compressed air flow. The pressure drop that occurs when the air flow through a sight feed oil cup delivers oil from the bowl to the sight oil indicator.

可通过该油杯调节油流量。通常每1000L空气中含有1-1.2滴油足够了。

The drop of the oil flows into the air channel when it is atomized.

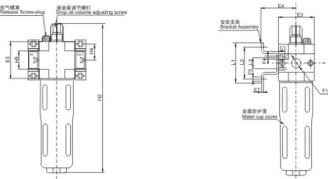
Constantly at work to achieve air refueling.

The oil drip rate is controlled by means of the regulating screw. Normally, 1 to 12 drops/1000L of the air is sufficient.

规格/Specifications

| 油雾器/Lubricators | MINI | | MIDI | | MAXI | |
|---|--|--------------|--------------|--------------|--------------|------------|
| 工作压力 Working pressure | JOL-1/8-MINI | JOL-1/4-MINI | JOL-3/8-MINI | JOL-1/2-MIDI | JOL-3/4-MIDI | JOL-1-MAXI |
| 工作压力 Medium | 压缩空气 / Compressed air | | | | | |
| 结构特点 Features of structure | 带水分离器的结构式过滤器 油雾器自动可变式 Sintered filter with water separator. The direct constant-density Lubricator | | | | | |
| 安装方式 Mounting type | 管式安装或支架安装 / Pipe mounting or foot mounting | | | | | |
| 安装位置 Assembly position | 垂直方向 (Vertical) ±5° | | | | | |
| 连接尺寸 Connection | G1/8" | G1/4" | G3/8" | G1/2" | G3/4" | G1" |
| 标准流量 Standard nominal flow rate | 1300 | 2300 | 2700 | 5500 | 6100 | 9000 |
| 最大工作压力 Max Working pressure | 16bar | | | | | |
| 最小流量 Min. Standard nominal flow rate | 3 L/min | | 6 L/min | | 10 L/min | |
| 最大容量 Max condensate capacity | 22ml | | | | | |
| 温度范围 Temperature range | 0-60°C | | | | | |
| 材料 Material | 壳体: 压铸铝 / Housing: Zinc die-casting; 过滤器和油杯: PC-金属保持罩 / Filter and oil bowl: PC/Metal bowl; 垫片/Aluminum alloy; 密封件/NBR | | | | | |
| 推荐用油 Recommended oil | ISO VG 32 或同等用油 / ISO VG 32 or the same grade | | | | | |

外形尺寸图/Main Dimensions(mm)



规格/Specifications

| 型号/Model | E3 | E4 | E7 | F1 | F4 | F5-φ | L1 | L2 | L3 | H4 | H5 |
|----------|----|----|----|---------------------|----|------|----|----|----|------|-------|
| JOL-MINI | 40 | 39 | 2 | G1/8", G1/4", G3/8" | M4 | 4.5 | 44 | 35 | 11 | 17.5 | 20 |
| JOL-MIDI | 55 | 47 | 3 | G1/8", G1/2", G3/4" | M5 | 5.5 | 71 | 60 | 22 | 24.5 | 32 |
| JOL-MAXI | 66 | 53 | 3 | G3/4", G1" | M5 | 5.5 | 71 | 60 | 22 | 24.5 | 32.40 |

JA系列气源处理件/JA Series Air Source Treatment Unit

订货单/How to Order

JA — **C** — **40** — **10** — **04** — **D** — **N**

JA系列环保型
JA Series

F: 过滤器+调压阀+油雾器
F: Filter + Regulator + Lubricator

W: 过滤器+调压阀
W: Filter + Regulator

R: 调压阀
R: Regulator

L: 油雾器
L: Lubricator

C: Filter + Regulator + Lubricator

F: Filter

W: Filter + Regulator

R: Regulator

L: Lubricator

10: 1000筒体
20: 2000筒体
25: 2500筒体
30: 3000筒体
40: 4000筒体
50: 5000筒体
10: 1000 body size
20: 2000 body size
25: 2500 body size
30: 3000 body size
40: 4000 body size
50: 5000 body size

10: 二件件过滤器+调压阀
(油雾器)
00: 其它
10: Two units(FR+Lubricator)
00: Other types

接口口径
Port size
M5, M6
01: 1/8"
02: 1/4"
03: 3/8"
04: 1/2"
06: 3/4"
10: 1"

空白: 手动排水型
D: 自动排水型
D: Auto drain type

接口形式
Blank Manual Drain type
N: 金属杯
N: Metal bowl

*JA系列过滤器通径: 4000筒体大小: 1/2" 接口口径: 手动排水型: 型号: JAC4010-04
*JA SERIES, F.R.L 4000 BODY SIZE, PORT SIZE: 1/2", MANUAL DRAIN TYPE, MODEL: JAC4010-04

气源处理件零件 Air source treatment unit kits

| JAR | JAF | JAL | JAW |
|---|---|---|---|
| <p>序号 NO</p> <p>零件名称 NAME</p> <p>数量 QTY</p> <p>材料 MATERIAL</p> <p>19 垫片 Lock 1 ABS</p> <p>20 密封胶圈 Seal 1 ABS</p> <p>17 密封胶圈 Seal 1 ABS</p> <p>16 弹簧 Spring 1 不锈钢 Stainless steel</p> <p>15 密封胶圈 Seal 1 碳钢 Carbon steel</p> <p>14 螺母 Nut 1 碳钢 Carbon steel</p> <p>13 密封胶圈 Seal 1 碳钢 Carbon steel</p> <p>12 O型圈 O-ring 1 NBR</p> <p>11 排水阀 Drain valve 1 碳钢 Carbon steel</p> <p>10 密封胶圈 Seal 1 碳钢 Carbon steel</p> <p>9 弹簧 Spring 1 碳钢 Carbon steel</p> <p>8 螺母 Nut 1 碳钢 Carbon steel</p> <p>7 排水阀 Drain valve 1 碳钢 Carbon steel</p> <p>6 密封胶圈 Seal 1 碳钢 Carbon steel</p> <p>5 密封胶圈 Seal 1 ABS</p> <p>4 密封胶圈 Seal 1 碳钢 Carbon steel</p> <p>3 密封胶圈 Seal 1 碳钢 Carbon steel</p> <p>2 O型圈 O-ring 1 NBR</p> <p>1 密封胶圈 Seal 1 碳钢 Carbon steel</p> | <p>序号 NO</p> <p>零件名称 NAME</p> <p>数量 QTY</p> <p>材料 MATERIAL</p> <p>19 垫片 Lock 1 ABS</p> <p>20 密封胶圈 Seal 1 ABS</p> <p>17 密封胶圈 Seal 1 ABS</p> <p>16 弹簧 Spring 1 不锈钢 Stainless steel</p> <p>15 密封胶圈 Seal 1 碳钢 Carbon steel</p> <p>14 螺母 Nut 1 碳钢 Carbon steel</p> <p>13 密封胶圈 Seal 1 碳钢 Carbon steel</p> <p>12 O型圈 O-ring 1 NBR</p> <p>11 排水阀 Drain valve 1 碳钢 Carbon steel</p> <p>10 密封胶圈 Seal 1 碳钢 Carbon steel</p> <p>9 弹簧 Spring 1 碳钢 Carbon steel</p> <p>8 螺母 Nut 1 碳钢 Carbon steel</p> <p>7 排水阀 Drain valve 1 碳钢 Carbon steel</p> <p>6 密封胶圈 Seal 1 碳钢 Carbon steel</p> <p>5 密封胶圈 Seal 1 ABS</p> <p>4 密封胶圈 Seal 1 碳钢 Carbon steel</p> <p>3 密封胶圈 Seal 1 碳钢 Carbon steel</p> <p>2 O型圈 O-ring 1 NBR</p> <p>1 密封胶圈 Seal 1 碳钢 Carbon steel</p> | <p>序号 NO</p> <p>零件名称 NAME</p> <p>数量 QTY</p> <p>材料 MATERIAL</p> <p>41 螺母 Nut 1 碳钢 Carbon steel</p> <p>40 密封胶圈 Seal 1 碳钢 Carbon steel</p> <p>39 螺母 Nut 1 PCMC</p> <p>38 密封胶圈 Seal 1 碳钢 Carbon steel</p> <p>37 密封胶圈 Seal 1 碳钢 Carbon steel</p> <p>36 手拧式 Cone screw 4 碳钢 Carbon steel</p> <p>35 密封胶圈 Seal 1 碳钢 Carbon steel</p> <p>34 手拧式 Cone screw 4 碳钢 Carbon steel</p> <p>33 密封胶圈 Seal 1 碳钢 Carbon steel</p> <p>32 手拧式 Cone screw 4 碳钢 Carbon steel</p> <p>31 密封胶圈 Seal 1 碳钢 Carbon steel</p> <p>30 密封胶圈 Seal 1 碳钢 Carbon steel</p> <p>29 密封胶圈 Seal 1 碳钢 Carbon steel</p> <p>28 密封胶圈 Seal 1 碳钢 Carbon steel</p> <p>27 密封胶圈 Seal 1 碳钢 Carbon steel</p> <p>26 密封胶圈 Seal 1 碳钢 Carbon steel</p> <p>25 密封胶圈 Seal 1 碳钢 Carbon steel</p> <p>24 密封胶圈 Seal 1 碳钢 Carbon steel</p> <p>23 密封胶圈 Seal 1 碳钢 Carbon steel</p> <p>22 密封胶圈 Seal 1 碳钢 Carbon steel</p> <p>21 密封胶圈 Seal 1 碳钢 Carbon steel</p> <p>20 密封胶圈 Seal 1 碳钢 Carbon steel</p> <p>19 密封胶圈 Seal 1 碳钢 Carbon steel</p> <p>18 密封胶圈 Seal 1 碳钢 Carbon steel</p> <p>17 密封胶圈 Seal 1 碳钢 Carbon steel</p> <p>16 密封胶圈 Seal 1 碳钢 Carbon steel</p> <p>15 密封胶圈 Seal 1 碳钢 Carbon steel</p> <p>14 密封胶圈 Seal 1 碳钢 Carbon steel</p> <p>13 密封胶圈 Seal 1 碳钢 Carbon steel</p> <p>12 密封胶圈 Seal 1 碳钢 Carbon steel</p> <p>11 密封胶圈 Seal 1 碳钢 Carbon steel</p> <p>10 密封胶圈 Seal 1 碳钢 Carbon steel</p> <p>9 密封胶圈 Seal 1 碳钢 Carbon steel</p> <p>8 密封胶圈 Seal 1 碳钢 Carbon steel</p> <p>7 密封胶圈 Seal 1 碳钢 Carbon steel</p> <p>6 密封胶圈 Seal 1 碳钢 Carbon steel</p> <p>5 密封胶圈 Seal 1 碳钢 Carbon steel</p> <p>4 密封胶圈 Seal 1 碳钢 Carbon steel</p> <p>3 密封胶圈 Seal 1 碳钢 Carbon steel</p> <p>2 密封胶圈 Seal 1 碳钢 Carbon steel</p> <p>1 密封胶圈 Seal 1 碳钢 Carbon steel</p> | <p>序号 NO</p> <p>零件名称 NAME</p> <p>数量 QTY</p> <p>材料 MATERIAL</p> <p>41 螺母 Nut 1 碳钢 Carbon steel</p> <p>40 密封胶圈 Seal 1 碳钢 Carbon steel</p> <p>39 螺母 Nut 1 PCMC</p> <p>38 密封胶圈 Seal 1 碳钢 Carbon steel</p> <p>37 密封胶圈 Seal 1 碳钢 Carbon steel</p> <p>36 手拧式 Cone screw 4 碳钢 Carbon steel</p> <p>35 密封胶圈 Seal 1 碳钢 Carbon steel</p> <p>34 手拧式 Cone screw 4 碳钢 Carbon steel</p> <p>33 密封胶圈 Seal 1 碳钢 Carbon steel</p> <p>32 手拧式 Cone screw 4 碳钢 Carbon steel</p> <p>31 密封胶圈 Seal 1 碳钢 Carbon steel</p> <p>30 密封胶圈 Seal 1 碳钢 Carbon steel</p> <p>29 密封胶圈 Seal 1 碳钢 Carbon steel</p> <p>28 密封胶圈 Seal 1 碳钢 Carbon steel</p> <p>27 密封胶圈 Seal 1 碳钢 Carbon steel</p> <p>26 密封胶圈 Seal 1 碳钢 Carbon steel</p> <p>25 密封胶圈 Seal 1 碳钢 Carbon steel</p> <p>24 密封胶圈 Seal 1 碳钢 Carbon steel</p> <p>23 密封胶圈 Seal 1 碳钢 Carbon steel</p> <p>22 密封胶圈 Seal 1 碳钢 Carbon steel</p> <p>21 密封胶圈 Seal 1 碳钢 Carbon steel</p> <p>20 密封胶圈 Seal 1 碳钢 Carbon steel</p> <p>19 密封胶圈 Seal 1 碳钢 Carbon steel</p> <p>18 密封胶圈 Seal 1 碳钢 Carbon steel</p> <p>17 密封胶圈 Seal 1 碳钢 Carbon steel</p> <p>16 密封胶圈 Seal 1 碳钢 Carbon steel</p> <p>15 密封胶圈 Seal 1 碳钢 Carbon steel</p> <p>14 密封胶圈 Seal 1 碳钢 Carbon steel</p> <p>13 密封胶圈 Seal 1 碳钢 Carbon steel</p> <p>12 密封胶圈 Seal 1 碳钢 Carbon steel</p> <p>11 密封胶圈 Seal 1 碳钢 Carbon steel</p> <p>10 密封胶圈 Seal 1 碳钢 Carbon steel</p> <p>9 密封胶圈 Seal 1 碳钢 Carbon steel</p> <p>8 密封胶圈 Seal 1 碳钢 Carbon steel</p> <p>7 密封胶圈 Seal 1 碳钢 Carbon steel</p> <p>6 密封胶圈 Seal 1 碳钢 Carbon steel</p> <p>5 密封胶圈 Seal 1 碳钢 Carbon steel</p> <p>4 密封胶圈 Seal 1 碳钢 Carbon steel</p> <p>3 密封胶圈 Seal 1 碳钢 Carbon steel</p> <p>2 密封胶圈 Seal 1 碳钢 Carbon steel</p> <p>1 密封胶圈 Seal 1 碳钢 Carbon steel</p> |



JAC1000-5000系列空气过滤组合(三联件)/JAC1000-5000 Series Air Filter Combination(F.R.L Combination)

订购码/Ordering Code

JA C 3000 03

系列 JA 系列
功能代码 三联件
规格代码 1000 2000 3000 4000 5000
接管口径 M5/M5×0.8 01/G1/8" 02/G1/4" 03/G3/8" 04/G1/2" 06/G3/4" 10/G1"
排水方式 Blank/Manual Drain Type D/Auto Drain Type (Available for 2000 or above)

| 型号/Model | JAC1000 | JAC2000 | JAC2500 | JAC3000 | JAC4000 | JAC5000 |
|--------------------------------------|--------------------------------|---------|----------------------|---------|---------|---------|
| 保证耐压力/Guaranteed pressure resistance | 1.5Mpa | | | | | |
| 最高使用压力/Max.working pressure | 1.0Mpa | | | | | |
| 工作温度/Working temperature | 5-60℃ | | | | | |
| 过滤精度/Filter precision | 25um(5um is optional) | | | | | |
| 建议用油/Recommended Oil | 透平1号油/Turbine No.1 oil ISOVG32 | | | | | |
| 容器材料/Bowl material | 聚碳酸酯/Polycarbonate | | | | | |
| 防护罩/Bowl guard | 有/Available | | | | | |
| 调压范围/Pressure adjusting range | 0.05-0.7Mpa | | 0.05-0.85Mpa | | | |
| 放水器功能/Drain Function | 差压放水/Differential Drain | | 自动放水/Automatic Drain | | | |
| 阀型/Valve type | 带流溢型/With overflow | | 带流溢型/With overflow | | | |

| 型号/Model | 过滤器/Filter | 减压阀/Regulator | 油雾器/Lubricator | *额定流量/Rated flow (L/min) | **接管口径/Port size (G) | 压力表口径/Pressure gauge thread size (G) | 重量/Weight (kg) | 托架/Bracket(2个) |
|------------|------------|---------------|----------------|--------------------------|----------------------|--------------------------------------|----------------|----------------|
| JAC1000-M5 | JAF1000 | JAR1000 | JAL1000 | 90 | M5 | 1/16 | 0.26 | Y10L |
| JAC2000-01 | JAF2000 | JAR2000 | JAL2000 | 500 | 1/8 | 1/8 | 0.74 | Y20L |
| JAC2000-02 | JAF2000 | JAR2000 | JAL2000 | 500 | 1/4 | 1/8 | 0.66 | Y20T |
| JAC2500-03 | JAF3000 | JAR3000 | JAL3000 | 1500 | 3/8 | 1/8 | 1.04 | Y30L |
| JAC3000-02 | JAF3000 | JAR3000 | JAL3000 | 1500 | 1/4 | 1/8 | 1.18 | Y30L |
| JAC3000-03 | JAF3000 | JAR3000 | JAL3000 | 2000 | 3/8 | 1/4 | 2.14 | Y40L |
| JAC4000-04 | JAF4000 | JAR4000 | JAL4000 | 4000 | 3/8 | 1/4 | 2.14 | Y40L |
| JAC4000-06 | JAF4000-06 | JAR4000-06 | JAL4000-06 | 4500 | 1/2 | 1/4 | 2.47 | Y50L |
| JAC5000-06 | JAF5000 | JAR5000 | JAL5000 | 5000 | 3/4 | 1/4 | 3.82 | Y60L |
| JAC5000-10 | JAF5000 | JAR5000 | JAL5000 | 5000 | 1 | 1/4 | 3.82 | Y60L |

* 以上信息基于0.71MPa的供应压力和0.51MPa的设置压力
** 接管口径有NPT/PT可供选择

外形尺寸图/Main Dimensions(mm)

| 型号/Model | 接管口径/Port Size(G) | A | B | C | D | E | F | G | H | J | K | L | M | N | P |
|------------|-------------------|-----|-------|------|----|------|------|-----|----|-----|-----|------|------|----|------|
| JAC1000 | M5 | 91 | 84.5 | 25.5 | 25 | 26 | 25 | 33 | 20 | 4.5 | 7.5 | 5 | 17.5 | 16 | 38.5 |
| JAC2000 | 1/8"-1/4" | 140 | 125 | 38 | 40 | 56.8 | 30 | 50 | 24 | 5.5 | 8.5 | 5 | 22 | 23 | 50 |
| JAC2500 | 1/4"-3/8" | 181 | 156.5 | 38 | 53 | 60.8 | 41 | 64 | 35 | 7 | 11 | 7 | 34.2 | 26 | 70.5 |
| JAC3000 | 1/4"-3/8" | 181 | 156.5 | 38 | 53 | 60.8 | 41 | 64 | 35 | 7 | 11 | 7 | 34.2 | 26 | 70.5 |
| JAC4000 | 3/8"-1/2" | 238 | 191.5 | 41 | 70 | 65.5 | 50 | 84 | 40 | 9 | 13 | 7 | 42.2 | 33 | 88 |
| JAC4000-06 | 3/4"-1" | 253 | 193 | 40.5 | 70 | 69.5 | 50 | 89 | 40 | 9 | 13 | 7 | 46.2 | 36 | 88 |
| JAC5000 | 3/4"-1" | 300 | 271.5 | 48 | 90 | 75.5 | 69.8 | 105 | 50 | 12 | 16 | 10.5 | 55.2 | 40 | 115 |

JAC1010-5010系列空气过滤组合(三联件)/JAC1010-5010 Series Air Filter Combination(F.R.L Combination)

订购码/Ordering Code

JA C 3010 03

系列 JA 系列
功能代码 三联件
规格代码 1010 2010 3010 4010 5010
接管口径 M5/M5×0.8 01/G1/8" 02/G1/4" 03/G3/8" 04/G1/2" 06/G3/4" 10/G1"
排水方式 Blank/Manual Drain Type D/Auto Drain Type (Available for 2000 or above)

| 型号/Model | JAC1010 | JAC2010 | JAC2510 | JAC3010 | JAC4010 | JAC5010 |
|--------------------------------------|--------------------------------|---------|----------------------|---------|---------|---------|
| 保证耐压力/Guaranteed pressure resistance | 1.5Mpa | | | | | |
| 最高使用压力/Max.working pressure | 1.0Mpa | | | | | |
| 工作温度/Working temperature | 5-60℃ | | | | | |
| 过滤精度/Filter precision | 25um(5um is optional) | | | | | |
| 建议用油/Recommended Oil | 透平1号油/Turbine No.1 oil ISOVG32 | | | | | |
| 容器材料/Bowl material | 聚碳酸酯/Polycarbonate | | | | | |
| 防护罩/Bowl guard | 有/Available | | | | | |
| 调压范围/Pressure adjusting range | 0.05-0.7Mpa | | 0.05-0.85Mpa | | | |
| 放水器功能/Drain Function | 差压放水/Differential Drain | | 自动放水/Automatic Drain | | | |
| 阀型/Valve type | 带流溢型/With overflow | | 带流溢型/With overflow | | | |

| 型号/Model | 过滤器/Filter with pressure reducer | 油雾器/Lubricator | *额定流量/Rated flow (L/min) | **接管口径/Port size (G) | 压力表口径/Pressure gauge thread size (G) | 重量/Weight (kg) | 托架/Bracket(2个) |
|------------|----------------------------------|----------------|--------------------------|----------------------|--------------------------------------|----------------|----------------|
| JAC1010-M5 | JAW1000 | JAL1000 | 90 | M5 | 1/16 | 0.22 | Y10T |
| JAC2010-01 | JAW2000 | JAL2000 | 500 | 1/8 | 1/8 | 0.66 | Y20T |
| JAC2010-02 | JAW2000 | JAL2000 | 500 | 1/4 | 1/8 | 0.66 | Y20T |
| JAC3010-02 | JAW3000 | JAL3000 | 1700 | 1/4 | 1/8 | 0.98 | Y30T |
| JAC3010-03 | JAW3000 | JAL3000 | 1700 | 3/8 | 1/8 | 0.98 | Y30T |
| JAC4010-03 | JAW4000 | JAL4000 | 3000 | 3/8 | 1/4 | 1.93 | Y40T |
| JAC4010-04 | JAW4000 | JAL4000 | 3000 | 1/2 | 1/4 | 1.93 | Y40T |
| JAC4010-06 | JAW4000-06 | JAL4000-06 | 3000 | 3/4 | 1/4 | 1.99 | Y50T |
| JAC5010-06 | JAW5000 | JAL5000 | 4000 | 3/4 | 1/4 | 3.20 | Y60T |
| JAC5010-10 | JAW5000 | JAL5000 | 4000 | 1 | 1/4 | 3.20 | Y60T |

* 以上信息基于0.71MPa的供应压力和0.51MPa的设置压力
** 接管口径有NPT/PT可供选择

外形尺寸图/Main Dimensions(mm)

| 型号/Model | 接管口径/Port Size(G) | A | B | C | D | E | F | G | H | J | K | L | M | N | P |
|------------|-------------------|-----|-------|------|----|------|------|------|----|-----|-----|------|------|----|------|
| JAC1010 | M5 | 58 | 109.5 | 50.5 | 25 | 26 | 25 | 29 | 20 | 4.5 | 7.5 | 5 | 17.5 | 16 | 38.5 |
| JAC2010 | 1/8"-1/4" | 90 | 164.5 | 78 | 40 | 56.8 | 30 | 45 | 24 | 5.5 | 8.5 | 5 | 22 | 23 | 50 |
| JAC3010 | 1/4"-3/8" | 117 | 211 | 92.5 | 53 | 60.8 | 41 | 58.5 | 35 | 7 | 11 | 7 | 34.2 | 26 | 70.5 |
| JAC4010 | 3/8"-1/2" | 154 | 262 | 112 | 70 | 70.5 | 50 | 77 | 40 | 9 | 13 | 7 | 42.2 | 33 | 88 |
| JAC4010-06 | 3/8"-1/2" | 164 | 267 | 114 | 70 | 70.5 | 50 | 82 | 40 | 9 | 13 | 7 | 46.2 | 36 | 88 |
| JAC5010 | 3/4"-1" | 195 | 338 | 116 | 90 | 75.5 | 69.8 | 97.5 | 50 | 12 | 16 | 10.5 | 55.2 | 40 | 115 |



JAW1000-5000系列过滤减压阀/JAW1000-5000 Series Filter&Regulator



订购码/Ordering Code

| | | | |
|-----------------|-----------------------------------|---|---|
| JA | W | 3000 | 03 |
| 系列 JA Series | 功能代号 过滤减压阀 Filter&Regulator | 规格代号 Function code 1000 2000 3000 4000 5000 | 接管口径 Port Size M5/M5×0.8 01.G1/8" 02.G1/4" 03.G3/8" 04.G1/2" 06.G3/4" 10.G1" |

规格/Specifications

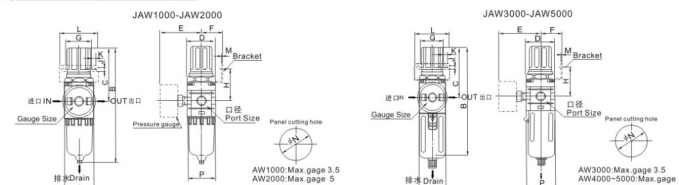
| 型号/Model | JAW1010 | JAW2010 | JAW2510 | JAW3010 | JAW4010 | JAW5010 |
|-------------------------------------|--------------------------------|---------|----------------------|---------|---------|---------|
| 保证耐压/Guaranteed pressure resistance | 1.5Mpa | | | | | |
| 最高使用压力/Max. working pressure | 1.0Mpa | | | | | |
| 工作温度/Working temperature | 5-60℃ | | | | | |
| 过滤精度/Filter precision | 25um(5um is optional) | | | | | |
| 建议用油/Recommended Oil | 透平1号油/Turbine No.1 oil ISOVG32 | | | | | |
| 容器材料/Bowl material | 聚碳酸酯/Polycarbonate | | | | | |
| 防护罩/Bowl guard | 无/None | | | | | |
| 调压范围/Pressure adjusting range | 0.05-0.7MPa | | 0.05-0.85MPa | | | |
| 放水器功能/Drain Function | 差压放水/Differential Drain | | 自动放水/Automatic Drain | | | |
| 阀型/Valve type | 两型 | | 带溢流型/W/with overflow | | | |

规格/Specifications

| 型号/Model | 额定流量 Rated flow (L/min) | **接管口径 Port size (G) | 压力接口 Pressure gauge thread size (G) | 重量 Weight (kg) | 托架 Bracket(2个) | 放水器功能 Drain function | 自动排水型号 Auto drain model |
|------------|-------------------------------|-------------------------|---|-------------------|-------------------|-------------------------------|----------------------------|
| JAW1000-M5 | 100 | M5 | 1/16 | 0.09 | B120 | 手动排水 Manual drain | JAW2000-01D |
| JAW2000-01 | 550 | 1/8 | 1/8 | 0.36 | B220 | a 零压排水 Zero pressure drain | JAW2000-02D |
| JAW2000-02 | | 1/4 | 1/8 | 0.56 | B320 | | JAW3000-02D |
| JAW3000-02 | 2000 | 1/4 | 3/8 | 1.15 | B420 | A 手动排水 Manual drain | JAW3000-03D |
| JAW3000-03 | 4000 | 3/8 | 1/4 | 1.21 | | | JAW4000-03D |
| JAW4000-04 | 4500 | 3/4 | 1/4 | 1.70 | JAW4000-04D | JAW4000-06D | JAW5000-06D |
| JAW5000-06 | 5500 | 3/4 | 1/4 | 1.70 | JAW5000-06D | JAW5000-10D | |

* 以上信息基于0.71Mpa的供应压力和0.51Mpa的设定压力
* The above information is based on 0.71 Mpa supply pressure and 0.51 Mpa set pressure

外形尺寸图/Main Dimensions(mm)



| 型号/Model | 接管口径/Port Size(G) | A | B | C | D | E | F | G | H | J | K | L | M | N | P |
|------------|-------------------|----|-------|------|----|------|------|----|------|-----|------|----|------|------|----|
| JAW1000 | M5 | 25 | 109.5 | 50.5 | 25 | 26 | 28 | 30 | 4.5 | 6.5 | 40 | 2 | 20.5 | 28 | |
| JAW2000 | 1/8"-1/4" | 40 | 164.5 | 78 | 40 | 66.8 | 30 | 34 | 43.5 | 5.4 | 15.4 | 55 | 2.3 | 33.5 | 40 |
| JAW3000 | 1/4"-3/8" | 53 | 211 | 92.5 | 53 | 60.8 | 41 | 40 | 46 | 6.5 | 8 | 53 | 2.3 | 42.5 | 56 |
| JAW4000 | 1/4"-3/8" | 70 | 262 | 112 | 70 | 70.5 | 50 | 54 | 53.5 | 8.5 | 10.5 | 70 | 2.3 | 52.2 | 73 |
| JAW4000-06 | 3/8"-1/2" | 75 | 267 | 114 | 70 | 70.5 | 50 | 54 | 55.5 | 8.5 | 10.5 | 70 | 2.3 | 52.5 | 73 |
| JAW5000 | 3/4"-1" | 90 | 338 | 116 | 90 | 75.5 | 69.8 | 54 | 62 | 8.5 | 10.5 | 70 | 2.3 | 52.5 | 90 |

JAF1000-5000系列空气过滤器/JAF1000-5000 Series Air Filter



订购码/Ordering Code

| | | | | |
|-----------------|-----------------------|--|---|--|
| JA | F | 3000 | 03 | □ |
| 系列 JA Series | 功能代号 过滤器 Filter | 规格代号 Specification Code 1010 2010 3010 4010 5010 | 接管口径 Port Size M5/M5×0.8 01.G1/8" 02.G1/4" 03.G3/8" 04.G1/2" 06.G3/4" 10.G1" | 排水方式 Drain Type Blank/Manual Drain Type D.Auto Drain Type (Available for 2000 or above) |

规格/Specifications

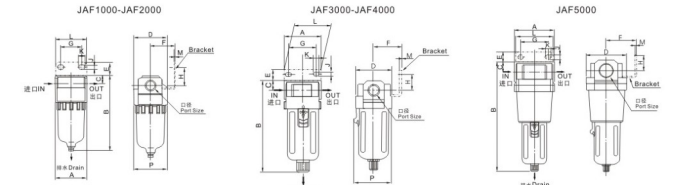
| 型号/Model | JAF1000 | JAF2000 | JAF2500 | JAF3000 | JAF4000 | JAF5000 |
|-------------------------------------|--------------------------------|---------|----------------------|---------|---------|---------|
| 保证耐压/Guaranteed pressure resistance | 1.5Mpa | | | | | |
| 最高使用压力/Max. working pressure | 1.0Mpa | | | | | |
| 工作温度/Working temperature | 5-60℃ | | | | | |
| 过滤精度/Filter precision | 25um(5um is optional) | | | | | |
| 建议用油/Recommended Oil | 透平1号油/Turbine No.1 oil ISOVG32 | | | | | |
| 容器材料/Bowl material | 聚碳酸酯/Polycarbonate | | | | | |
| 防护罩/Bowl guard | 无/None | | | | | |
| 调压范围/Pressure adjusting range | 0.05-0.7MPa | | 0.05-8.5 | | | |
| 放水器功能/Drain Function | 差压放水/Differential Drain | | 自动放水/Automatic Drain | | | |
| 阀型/Valve type | 两型 | | 带溢流型/W/with overflow | | | |

规格/Specifications

| 型号/Model | 额定流量 Rated flow (L/min) | **接管口径 Port size (G) | 杯容量 Bowl capacity (CM) | 重量 Weight (kg) | 托架 Bracket(2个) | 放水器功能 Drain function | 自动排水型号 Auto drain model |
|------------|-------------------------------|-------------------------|------------------------------|-------------------|-------------------|-------------------------------|----------------------------|
| JAF1000-M5 | 110 | M5 | 4 | 0.07 | | 手动排水 Manual drain | JAW2000-01D |
| JAF2000-01 | 750 | 1/8 | 15 | 0.19 | B240 | a 零压排水 Zero pressure drain | JAW2000-02D |
| JAF2000-02 | | 1/4 | 20 | 0.29 | B340 | | JAW3000-02D |
| JAF3000-02 | 1500 | 3/8 | 45 | 0.55 | B440 | A 手动排水 Manual drain | JAW3000-03D |
| JAF3000-03 | 4000 | 3/4 | 45 | 0.58 | B540 | | JAW4000-03D |
| JAF4000-04 | 6000 | 3/4 | 130 | 1.08 | B640 | JAW4000-04D | JAW4000-06D |
| JAF5000-06 | 7000 | 1 | | | | JAW5000-06D | JAW5000-10D |

* 以上信息基于0.71Mpa的供应压力和0.51Mpa的设定压力
* The above information is based on 0.71 Mpa supply pressure and 0.51 Mpa set pressure

外形尺寸图/Main Dimensions(mm)



| 型号/Model | 接管口径/Port Size(G) | A | B | C | D | E | F | G | H | J | K | L | M | N | P |
|------------|-------------------|----|-------|----|----|----|------|----|----|-----|------|----|-----|------|------|
| JAF1000 | M5 | 25 | 66 | 7 | 25 | - | - | - | - | - | - | - | - | - | 26.5 |
| JAF2000 | 1/8"-1/4" | 40 | 97.5 | 11 | 40 | 17 | 30 | 27 | 22 | 5.4 | 8.4 | 40 | 2.3 | 33.5 | 40 |
| JAF3000 | 1/4"-3/8" | 53 | 132.5 | 14 | 53 | 16 | 41 | 40 | 23 | 6.5 | 8 | 53 | 2.3 | 33.5 | 56 |
| JAF4000 | 1/4"-3/8" | 70 | 168.5 | 18 | 70 | 17 | 50 | 54 | 26 | 8.5 | 10.5 | 70 | 2.3 | 33.5 | 73 |
| JAF4000-06 | 3/8"-1/2" | 75 | 172.5 | 20 | 70 | 14 | 50 | 54 | 25 | 8.5 | 10.5 | 70 | 2.3 | 33.5 | 73 |
| JAF5000 | 3/4"-1" | 90 | 247.5 | 24 | 90 | 23 | 66.5 | 66 | 35 | 11 | 13 | 90 | 3.2 | 33.5 | 90 |



JAL1000-5000系列油雾器/JAL 1000-5000 Series Lubricator



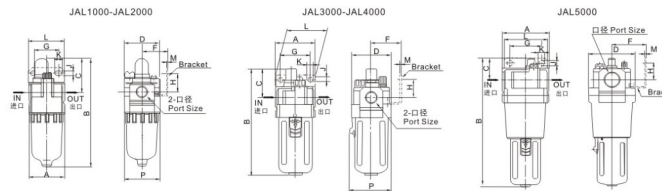
订购码/Ordering Code
JA L 3000 03
系列 JA 系列 功能代号 规格代号 接管口径
Series JA series Function code Specification Code Port Size
MS M5 × 0.8
01 G1/8" 02 G1/4"
03 G3/8" 04 G1/2"
06 G3/4" 10 G1"

| 型号/Model | JAL1000 | JAL2000 | JAL2500 | JAL3000 | JAL4000 | JAL5000 |
|--------------------------------------|---------|---------|--------------------------------|---------|---------|--------------------|
| 保证耐压力/Guaranteed pressure resistance | | | 1.5Mpa | | | |
| 最高使用压力/Max. working pressure | | | 1.0Mpa | | | |
| 环境温度/Working temperature | | | 5-60℃ | | | |
| 过滤精度/Filter precision | | | 25um(5um is optional) | | | |
| 建议用油/Recommended Oil | | | 透平1号油/Turbine No.1 oil ISOVG32 | | | |
| 容器材料/Bowl material | | | 聚碳酸酯/Polycarbonate | | | |
| 防护罩/Bowl guard | | 无/None | | | | 有/Available |
| 阀型/Valve type | | | | | | 带流溢型/With overflow |

| 型号/Model | 规格/Specifications | | | | | | 配件/Accessories |
|------------|--|-------------------------------|-------------------------|------------------------------|-------------------|-------------------|----------------|
| | 滴流量小流量 Minimal flow of oil (G/min) | 额定流量 Rated flow (G/min) | **接管口径 Port size (G) | 杯容量 Bowl capacity (CM) | 重量 Weight (kg) | 托架 Bracket(2个) | |
| JAL1000-M5 | 4 | 95 | M5 | 7 | 0.07 | - | |
| JAL2000-01 | 15 | 800 | 1/8 | 25 | 0.22 | B240 | |
| JAL2000-02 | | | 1/4 | | | | |
| JAL3000-02 | 30 | 1700 | 1/4 | 50 | 0.50 | B340 | |
| JAL3000-03 | 40 | | 3/8 | | | | |
| JAL4000-03 | 40 | 5000 | 3/8 | 130 | 0.56 | B420 | |
| JAL4000-04 | 50 | | 1/2 | | | | |
| JAL4000-06 | 50 | 6300 | 3/4 | 130 | 0.58 | B540 | |
| JAL5000-06 | | | 3/4 | | | | |
| JAL5000-10 | 190 | 7000 | 1 | 130 | 1.08 | B640 | |

*以上信息基于0.51Mpa的供应压力，2-3滴/分钟的滴流量，20℃的透平1号油(ISOVG32)油液。
*The above information is based on 0.51Mpa Supply pressure, the flow of oil drop is 2-3 drops/min, the temperature of Turbine NO.1 oil is 20℃
*以上信息基于0.51Mpa的供应压力和0.03Mpa的设定压力。
*The above information is based on 0.51Mpa Supply pressure and 0.03 Mpa Set point
**接管口径有NPT,PT螺纹可供选择。
**NPT,PT port size is optional

外形尺寸图/Main Dimensions(mm)



| 型号/Model | 接管口径/Port Size(G) | A | B | C | D | F | G | H | J | K | L | M | P |
|------------|-------------------|----|------|------|----|------|----|----|-----|------|----|-----|----|
| JAL1000 | M5 | 25 | 81.5 | 25.5 | 25 | - | - | - | - | - | - | - | 27 |
| JAL2000 | 1/8"-1/4" | 40 | 122 | 39 | 40 | 30 | 27 | 22 | 5.4 | 8.4 | 40 | 2.3 | 40 |
| JAL3000 | 1/4"-3/8" | 53 | 142 | 38 | 53 | 41 | 40 | 23 | 6.5 | 8 | 53 | 2.3 | 56 |
| JAL4000 | 1/4"-3/8" | 70 | 177 | 41 | 70 | 50 | 54 | 26 | 8.5 | 10.5 | 70 | 2.3 | 73 |
| JAL4000-06 | 3/8"-1/2" | 75 | 177 | 39 | 70 | 50 | 54 | 25 | 8.5 | 10.5 | 70 | 2.3 | 73 |
| JAL5000 | 3/4"-1" | 90 | 254 | 45 | 90 | 66.5 | 66 | 35 | 11 | 13 | 90 | 3.2 | 90 |

JAR1000-5000系列减压阀/JAR1000-5000 Series Regulator



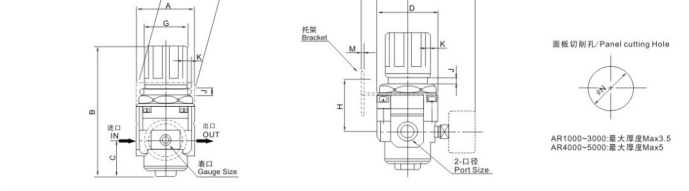
订购码/Ordering Code
JA R 3000 03
系列 JA 系列 功能代号 规格代号 接管口径
Series JA series Function code Specification Code Port Size
MS M5 × 0.8
01 G1/8" 02 G1/4"
03 G3/8" 04 G1/2"
06 G3/4" 10 G1"

| 型号/Model | JAR1000 | JAR2000 | JAR2500 | JAR3000 | JAR4000 | JAR5000 |
|--------------------------------------|---------|-------------|---------|--------------|---------|--------------------|
| 保证耐压力/Guaranteed pressure resistance | | | 1.5Mpa | | | |
| 最高使用压力/Max. working pressure | | | 1.0Mpa | | | |
| 工作温度/Working temperature | | | 5-60℃ | | | |
| 调压范围/Pressure adjusting range | | 0.05-0.7Mpa | | 0.05-0.85Mpa | | |
| 阀型/Valve type | | | | | | 带流溢型/With overflow |

| 型号/Model | 规格/Specifications | | | | | | 配件/Accessories |
|------------|-------------------------------|-------------------------|---|-------------------|-------------------|--|----------------|
| | 额定流量 Rated flow (G/min) | **接管口径 Port size (G) | 压力或口径 Pressure or thread size (G) | 重量 Weight (kg) | 托架 Bracket(2个) | | |
| JAR1000-M5 | 100 | M5 | 1/16 | 0.08 | B120 | | |
| JAR2000-01 | 550 | 1/8 | 1/8 | 0.27 | B220 | | |
| JAR2000-02 | | | 1/4 | | | | |
| JAR2500-02 | 2000 | 1/4 | 1/8 | 0.27 | B220 | | |
| JAR3000-02 | | 3/8 | | | | | |
| JAR3000-02 | 2500 | 1/4 | 1/8 | 0.41 | B320 | | |
| JAR3000-03 | | 3/8 | | | | | |
| JAR4000-03 | 6000 | 3/8 | 1/4 | 0.84 | | | |
| JAR4000-04 | | 1/2 | 1/4 | | | | |
| JAR4000-06 | 6000 | 3/4 | 1/4 | 0.94 | B420 | | |
| JAR5000-06 | 8000 | 3/4 | 1/4 | | | | |
| JAR5000-10 | | 1 | 1/4 | 1.19 | | | |

*以上信息基于0.71Mpa的供应压力和0.51Mpa的设定压力。
*The above information is based on 0.71 Mpa supply pressure and 0.51 Mpa set pressure
**接管口径有NPT,PT可供选择。
**NPT,PT port size is optional

外形尺寸图/Main Dimensions(mm)



| 型号/Model | 接管口径/Port Size(G) | A | B | C | D | E | F | G | H | J | K | L | M | N |
|------------|-------------------|----|-------|------|----|------|------|----|------|-----|------|----|-----|------|
| JAR1000 | M5 | 25 | 61.5 | 11 | 25 | 26 | 25 | 28 | 30 | 4.5 | 6.5 | 40 | 2 | 20.5 |
| JAR2000 | 1/8"-1/4" | 40 | 95 | 17 | 40 | 56.8 | 30 | 34 | 44 | 5.4 | 15.4 | 55 | 2.3 | 33.5 |
| JAR2500 | 1/4"-3/8" | 53 | 102.5 | 25 | 48 | 60.8 | 30 | 34 | 44 | 5.4 | 15.4 | 55 | 2.3 | 33.5 |
| JAR3000 | 1/4"-3/8" | 53 | 127.5 | 35 | 53 | 60.8 | 39 | 40 | 46 | 6.5 | 8 | 53 | 2.3 | 42.5 |
| JAR4000 | 3/8"-1/2" | 70 | 149.5 | 37.5 | 70 | 65.5 | 49.2 | 54 | 54 | 8.5 | 10.5 | 70 | 2.3 | 52.5 |
| JAR4000-06 | 3/4" | 75 | 154 | 40.5 | 70 | 69.5 | 49.2 | 54 | 55.5 | 8.5 | 10.5 | 70 | 2.3 | 52.5 |
| JAR5000 | 3/4"-1" | 90 | 168 | 48 | 90 | 75.5 | 49.2 | 54 | 62 | 8.5 | 10.5 | 70 | 2.3 | 52.5 |



JMAC2000-5000系列空气过滤器/JMAC2000-5000 Series Air Source Treatment Unit(F.R.L Combination)



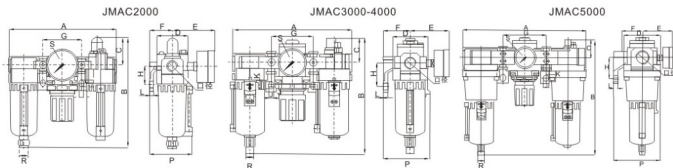
规格/Specifications

| 型号/Model | JMAC2000 | JMAC3000 | JMAC4000 | JMAC5000 |
|---|----------------------------------|----------|----------|----------|
| 保证耐压 / Guaranteed pressure resistance (Bar) | 15 | | | |
| 最高使用压力 / Max. Working pressure (Bar) | 10 | | | |
| 工作温度 / Working temperature (°C) | 5-60 | | | |
| 过滤精度 / Filter precision | 25um(5um is optional) | | | |
| 建议用油 / Recommended oil | 透平1号油 / Turbine No.1 Oil ISOVG32 | | | |
| 壳体材料 / Bowl material | 铝压铸件 / Aluminum die-casting | | | |
| 防护罩 / Bowl guard | 无 / None | | | |
| 调压范围 / Pressure adjusting range (Bar) | 0.5-8.5 | | | |
| 阀型 / Valve type | 带溢流型 / With overflow | | | |

| 型号/Model | 规格/Specifications | | | | 配件/Accessories | | | |
|-------------|-------------------|------------------|-------------------|--------------------------------|-----------------------|---|-------------------|-------------------|
| | 过滤器 Filter | 减压阀 Regulator | 油雾器 Lubricator | *额定流量 Rated flow (L/min) | *接管口径 Port size(G) | 压力表口径 Pressure gauge thread size(G) | 重量 Weight (kg) | 托架 Bracket(2个) |
| JMAC2000-01 | JMAF2000 | ER2000 | JMAL2000 | 500 | 1/8 | 1/8 | 0.74 | Y20L |
| JMAC2000-02 | JMAF2000 | ER2000 | JMAL2000 | 500 | 1/4 | 1/8 | 0.66 | Y20L |
| JMAC2500-02 | JMAF2500 | ER2500 | JMAL3000 | 1500 | 1/4 | 1/8 | 1.04 | Y30L |
| JMAC2500-03 | JMAF3000 | ER3000 | JMAL3000 | 2000 | 3/8 | 1/8 | 1.18 | Y30L |
| JMAC3000-02 | JMAF3000 | ER3000 | JMAL3000 | 2000 | 1/4 | 1/8 | 1.18 | Y30L |
| JMAC3000-03 | JMAF3000 | ER3000 | JMAL3000 | 2000 | 3/8 | 1/8 | 1.18 | Y30L |
| JMAC4000-03 | JMAF4000 | ER4000 | JMAL4000 | 4000 | 3/8 | 1/4 | 2.14 | Y40L |
| JMAC4000-04 | JMAF4000 | ER4000 | JMAL4000 | 4000 | 1/2 | 1/4 | 2.47 | Y50L |
| JMAC4000-06 | JMAF4000-06 | ER4000-06 | JMAL4000-06M | 4500 | 3/4 | 1/4 | 2.47 | Y50L |
| JMAC5000-06 | JMAF5000 | ER5000 | JMAL5000 | 5000 | 3/4 | 1/4 | 3.82 | Y60L |
| JMAC5000-10 | JMAF5000 | ER5000 | JMAL5000 | 5000 | 1 | 1/4 | 3.82 | Y60L |

* 以上信息基于7.1Bar的供应压力和5.1Bar的设定压力
* The above information is based on 7.1Bar supply pressure and 5.1 Bar set pressure
* 接管口径有NPT, PT可供选
* NPT, PT port size is optional

外形尺寸图/Main Dimensions(mm)



| 型号/Model | 接管口径Port Size(G) | A | B | C | D | E | F | G | H | I | J | K | L | M | N | O | P | Q | R | S |
|-------------|------------------|-----|-------|------|----|------|------|-----|----|-----|-----|------|------|----|------|---|---|---|---|---|
| JMAC2000 | 1/8"-1/4" | 140 | 147 | 38 | 40 | 56.8 | 30 | 50 | 24 | 5.5 | 8.5 | 5 | 56 | Φ6 | G1/8 | | | | | |
| JMAC3000 | 1/4"-3/8" | 181 | 178 | 38 | 53 | 60.8 | 41 | 64 | 35 | 7 | 11 | 7 | 70.5 | Φ8 | G1/8 | | | | | |
| JMAC4000-04 | 1/2" | 238 | 207 | 41 | 70 | 65.5 | 50 | 84 | 40 | 9 | 13 | 7 | 87.5 | Φ8 | G1/4 | | | | | |
| JMAC4000-06 | 3/4 | 253 | 208.5 | 40.5 | 70 | 69.5 | 50 | 89 | 40 | 9 | 13 | 7 | 87.5 | Φ8 | G1/4 | | | | | |
| JMAC5000 | 3/4"-1" | 300 | 287 | 48 | 90 | 75.5 | 69.8 | 105 | 50 | 12 | 16 | 10.5 | 115 | Φ8 | G1/4 | | | | | |

JMAC2010-5010系列空气过滤组合/JMAC2010-5010 Series Air Source Treatment Unit(F.R.L Combination)



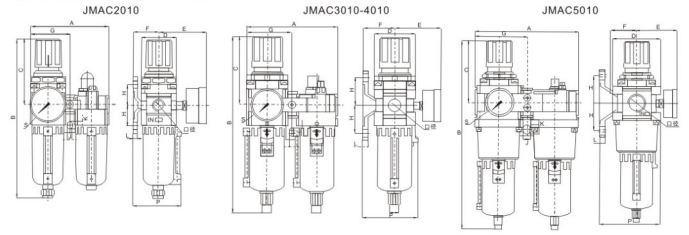
规格/Specifications

| 型号/Model | JMAC2010 | JMAC3010 | JMAC4010 | JMAC5010 |
|---|----------------------------------|----------|----------|----------|
| 保证耐压 / Guaranteed pressure resistance (Bar) | 15 | | | |
| 最高使用压力 / Max. Working pressure (Bar) | 10 | | | |
| 工作温度 / Working temperature (°C) | 5-60 | | | |
| 过滤精度 / Filter precision | 25um(5um is optional) | | | |
| 建议用油 / Recommended oil | 透平1号油 / Turbine No.1 Oil ISOVG32 | | | |
| 壳体材料 / Bowl material | 铝压铸件 / Aluminum die-casting | | | |
| 防护罩 / Bowl guard | 有 / Available | | | |
| 调压范围 / Pressure adjusting range (Bar) | 0.5-8.5 | | | |
| 阀型 / Valve type | 带溢流型 / With overflow | | | |

| 型号/Model | 规格/Specifications | | | | 配件/Accessories | | |
|-------------|-------------------|-------------------|--------------------------------|-----------------------|---|-------------------|-------------------|
| | 过滤器 Filter | 油雾器 Lubricator | *额定流量 Rated flow (L/min) | *接管口径 Port size(G) | 压力表口径 Pressure gauge thread size(G) | 重量 Weight (kg) | 托架 Bracket(2个) |
| JMAC2010-01 | JMAW2000 | JMAL2000 | 500 | 1/8 | 1/8 | 0.66 | Y20L |
| JMAC2010-02 | JMAW2000 | JMAL2000 | 500 | 1/4 | 1/8 | 0.66 | Y20L |
| JMAC3010-02 | JMAW3000 | JMAL3000 | 1700 | 1/4 | 1/8 | 0.88 | Y30L |
| JMAC3010-03 | JMAW3000 | JMAL3000 | 1700 | 3/8 | 1/8 | 0.88 | Y30L |
| JMAC4010-03 | JMAW4000 | JMAL4000 | 3000 | 3/8 | 1/4 | 1.93 | Y40L |
| JMAC4010-04 | JMAW4000 | JMAL4000 | 3000 | 1/2 | 1/4 | 1.93 | Y40L |
| JMAC4010-06 | JMAW4000-06 | JMAL4000-06 | 3000 | 3/4 | 1/4 | 1.99 | Y50L |
| JMAC5010-06 | JMAW5000 | JMAL5000 | 4000 | 3/4 | 1/4 | 3.20 | Y60L |
| JMAC5010-10 | JMAW5000 | JMAL5000 | 4000 | 1 | 1/4 | 3.20 | Y60L |

* 供应压力为7.1Bar的供应压力和5.1Bar的设定压力
* Under the circumstance that the supply pressure is 7.1 Bar and set pressure is 5.1 Bar
* 接管口径有NPT, PT可供选
* NPT, PT port size are available

外形尺寸图/Main Dimensions(mm)



| 型号/Model | 接管口径Port Size(G) | A | B | C | D | E | F | G | H | I | J | K | L | M | N | O | P | Q | R | S |
|-------------|------------------|-----|-------|------|----|------|------|------|----|-----|-----|------|------|----|------|---|---|---|---|---|
| JMAC2010 | 1/8"-1/4" | 90 | 186.5 | 78 | 40 | 56.8 | 30 | 45 | 24 | 5.5 | 8.5 | 5 | 56 | Φ6 | G1/8 | | | | | |
| JMAC3010 | 1/4"-3/8" | 117 | 232.5 | 92.5 | 53 | 60.8 | 41 | 58.5 | 35 | 7 | 11 | 7 | 69.5 | Φ8 | G1/8 | | | | | |
| JMAC4010-04 | 1/2" | 154 | 277 | 112 | 70 | 65.5 | 50 | 77 | 40 | 9 | 13 | 7 | 87.5 | Φ8 | G1/4 | | | | | |
| JMAC4010-06 | 3/4 | 164 | 282.5 | 114 | 70 | 69.5 | 50 | 82 | 40 | 9 | 13 | 7 | 87.5 | Φ8 | G1/4 | | | | | |
| JMAC5010 | 3/4"-1" | 195 | 353.5 | 116 | 90 | 75.5 | 69.8 | 97.5 | 50 | 12 | 16 | 10.5 | 115 | Φ8 | G1/4 | | | | | |



JMAW2000-5000系列过滤减压阀/JMAW2000-5000 Series Filter&Regulator



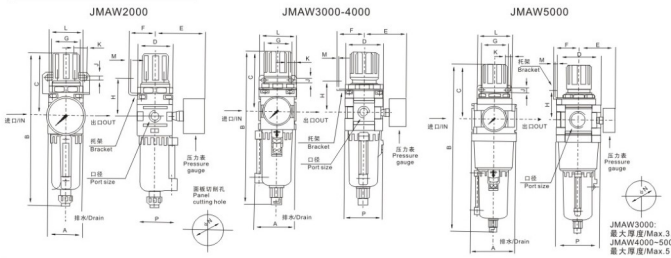
规格/Specifications

| 型号/Model | JMAW2000 | JMAW3000 | JMAW4000 | JMAW5000 |
|---|----------|----------|-----------------------------|----------|
| 保证耐压力 / Guaranteed pressure resistance(Bar) | | | 15 | |
| 最高使用压力 / Max. Working pressure(Bar) | | | 10 | |
| 工作温度 / Working temperature(°C) | | | 5-60 | |
| 过滤精度 / Filter precision | | | 25um(Sum is optional) | |
| 容器材料 / Bowl material | | | 铝压铸件 / Aluminum die-casting | |
| 防护罩 / Bowl guard | 无 / None | | 有 / Available | |
| 调压范围 / Pressure adjusting range(Bar) | | | 0.5-8.5 | |
| 阀型 / Valve type | | | 带溢流型 / With overflow | |

| 型号 / Model | *额定流量 Rated flow (L/min) | *接管口径 Port size(G) | 压力或口径 Pressure gauge thread size (G) | 重量 Weight(kg) | 托架 Bracket(2个) | 排水器功能 Drain function | 自动排水型号 Auto drain model |
|-------------|--------------------------------|-----------------------|--|------------------|-------------------|--------------------------------|----------------------------|
| JMAW2000-01 | 550 | 1/8 | 1/8 | 0.29 | B220 | 手动排水 Manual drain | JMAW2000-01MD |
| JMAW2000-02 | | 1/4 | | | | | JMAW2000-02MD |
| JMAW3000-02 | 2000 | 1/4 | 1/8 | 0.55 | B320 | | JMAW3000-02MD |
| JMAW3000-03 | | 3/8 | | | | | JMAW3000-03MD |
| JMAW4000-03 | 4000 | 3/8 | 1/4 | 1.16 | | a. 零压排水 Zero pressure drain | JMAW4000-03MD |
| JMAW4000-04 | | 1/2 | | | | b. 手动排水 Manual drain | JMAW4000-04MD |
| JMAW4000-06 | 4500 | 3/4 | 1/4 | 1.2 | B420 | | JMAW4000-06MD |
| JMAW5000-06 | 5500 | 3/4 | 1/4 | 1.79 | | | JMAW5000-06MD |
| JMAW5000-10 | | 1 | | | | | JMAW5000-10MD |

* 以上信息基于7.1Bar的供应压力和5.1Bar的设定压力
* The above information is based on 7.1Bar supply pressure and 5.1 Bar set pressure
* 接管口径有NPT, PT可供选择
* NPT, PT port size is optional

外形尺寸图/Main Dimensions(mm)



| 型号/Model | 接管口径/Port Size(G) | A | B | C | D | E | F | G | H | I | J | K | L | M | P |
|-------------|-------------------|------|-------|------|----|------|------|----|------|-----|------|-----|-----|------|---|
| HNEW2000 | 1/8"-1/4" | 40 | 186.5 | 78 | 40 | 56.8 | 30 | 34 | 43.5 | 5.4 | 15.4 | 5.5 | 2.3 | 4.6 | |
| HNEW3000 | 1/4"-3/8" | 57.5 | 232.5 | 92.5 | 53 | 60.8 | 39 | 40 | 46 | 6.5 | 8 | 5.3 | 2.3 | 5.6 | |
| HNEW4000 | 3/8"-1/2" | 74 | 278 | 112 | 70 | 70.5 | 49.2 | 54 | 53.5 | 8.5 | 10.5 | 7.0 | 2.3 | 72.5 | |
| HNEW4000-06 | 3/4 | 76.5 | 282 | 114 | 70 | 70.5 | 49.2 | 54 | 55.5 | 8.5 | 10.5 | 7.0 | 2.3 | 72.5 | |
| HNEW5000 | 3/4"-1" | 90 | 355 | 116 | 90 | 75.5 | 49.2 | 54 | 62 | 8.5 | 10.5 | 7.0 | 2.3 | 90 | |

JMAF2000-5000系列气源处理件/JMAF2000-5000 Series Air Filter



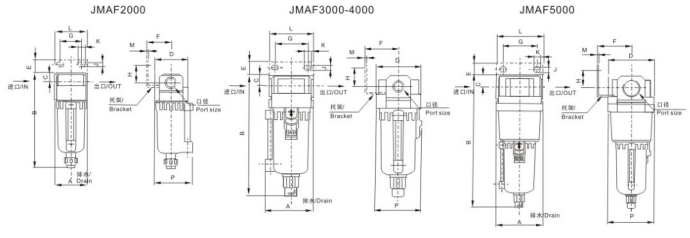
规格/Specifications

| 型号/Model | JMAF2000 | JMAF3000 | JMAF4000 | JMAF5000 |
|---|----------|----------|-----------------------------|----------|
| 保证耐压力 / Guaranteed pressure resistance(Bar) | | | 15 | |
| 最高使用压力 / Max. Working pressure(Bar) | | | 10 | |
| 工作温度 / Working temperature(°C) | | | 5-60 | |
| 过滤精度 / Filter precision | | | 25um(Sum is optional) | |
| 容器材料 / Bowl material | | | 铝压铸件 / Aluminum die-casting | |
| 防护罩 / Bowl guard | 无 / None | | 有 / Available | |
| 调压范围 / Pressure adjusting range(Bar) | | | 0.5-8.5 | |
| 阀型 / Valve type | | | 带溢流型 / With overflow | |

| 型号 / Model | *额定流量 Rated flow (L/min) | *接管口径 Port size (G) | 杯容量 Bowl capacity (cm³) | 重量 Weight(kg) | 托架 Bracket(2个) | 排水器功能 Drain function | 自动排水型号 Auto drain model |
|-------------|--------------------------------|---------------------------|-------------------------------|------------------|-------------------|--------------------------------|----------------------------|
| JMAF2000-01 | 750 | 1/8 | 15 | 0.17 | B240 | 手动排水 Manual drain | JMAF2000-01MD |
| JMAF2000-02 | | 1/4 | | | | | JMAF2000-02MD |
| JMAF3000-02 | 1500 | 1/4 | 20 | 0.29 | B340 | | JMAF3000-02MD |
| JMAF3000-03 | | 3/8 | | | | | JMAF3000-03MD |
| JMAF4000-03 | 4000 | 3/8 | 45 | 0.53 | B440 | a. 零压排水 Zero pressure drain | JMAF4000-03MD |
| JMAF4000-04 | | 1/2 | | | | b. 手动排水 Manual drain | JMAF4000-04MD |
| JMAF4000-06 | 6000 | 3/4 | 45 | 0.58 | B540 | | JMAF4000-06MD |
| JMAF5000-06 | 7000 | 3/4 | 130 | 1.05 | B640 | | JMAF5000-06MD |
| JMAF5000-10 | | 1 | | | | | JMAF5000-10MD |

* 以上信息基于7.1Bar的供应压力和5.1Bar的设定压力
* The above information is based on 7.1Bar supply pressure and 5.1 Bar set pressure
* 接管口径有NPT, PT可供选择
* NPT, PT port size is optional

外形尺寸图/Main Dimensions(mm)



| 型号/Model | 接管口径/Port Size(G) | A | B | C | D | E | F | G | H | I | J | K | L | M | P |
|-------------|-------------------|------|-------|----|----|------|----|----|-----|------|-----|-----|------|---|---|
| HNEL2000 | 1/8"-1/4" | 40 | 137 | 38 | 50 | 30 | 27 | 22 | 5.4 | 8.4 | 4.0 | 2.3 | 4.0 | | |
| HNEL3000 | 1/4"-3/8" | 57.4 | 154.5 | 38 | 53 | 41 | 40 | 23 | 6.5 | 8 | 5.3 | 2.3 | 5.5 | | |
| HNEL4000 | 3/8"-1/2" | 74 | 185.5 | 41 | 70 | 50 | 54 | 26 | 8.5 | 10.5 | 7.0 | 2.3 | 72.5 | | |
| HNEL4000-06 | 3/4 | 76.5 | 185.5 | 39 | 70 | 50 | 54 | 25 | 8.5 | 10.5 | 7.0 | 2.3 | 72.5 | | |
| HNEL5000 | 3/4"-1" | 90 | 262.5 | 45 | 90 | 66.5 | 66 | 35 | 11 | 13 | 9.0 | 3.2 | 9.0 | | |



JMAL2000-5000系列油雾器/JMAL2000-5000 Series Lubricator



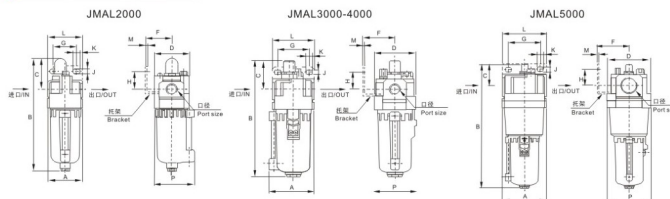
规格/Specifications

| 型号/Model | JMAL2000 | JMAL3000 | JMAL4000 | JMAL5000 |
|---|-----------------------------------|----------|----------|----------|
| 保证耐压力/ Guaranteed pressure resistance (Bar) | 15 | | | |
| 最高使用压力/ Max. Working pressure (Bar) | 10 | | | |
| 工作温度 / Working temperature (°C) | 5-60 | | | |
| 建议用油 / Recommended oil | 透平1号油 / Turbine No. 1 Oil ISOVG32 | | | |
| 容器材料 / Bowl material | 铝压铸件 / Aluminum die-casting | | | |
| 防护罩 / Bowl guard | 无 / None | | | |
| 阀型 / Valve type | 带溢流型 / With overflow | | | |

| 型号 / Model | 规格 / Specifications | | | | | 配件 / Accessories |
|-------------|---|-----------------------------|------------------------|---------------------------|------------------|------------------|
| | 滴流量 / 小滴量 / Minimal flow / Oil drop (L/min) | * 额定流量 / Rated flow (L/min) | * 接管口径 / Port size (G) | 杯容量 / Bowl capacity (cm³) | 重量 / Weight (kg) | |
| JMAL2000-01 | 15 | 800 | 1/8 | 25 | 0.17 | B240 |
| JMAL2000-02 | 30 | 1700 | 1/4 | 50 | 0.30 | B340 |
| JMAL3000-02 | 30 | 1700 | 3/8 | 50 | 0.30 | B340 |
| JMAL3000-03 | 40 | 5000 | 1/2 | 130 | 0.53 | B440 |
| JMAL4000-03 | 40 | 5000 | 3/4 | 130 | 0.59 | B540 |
| JMAL4000-04 | 50 | 6300 | 3/4 | 130 | 1.13 | B640 |
| JMAL4000-06 | 50 | 6300 | 3/4 | 130 | 1.13 | B640 |
| JMAL5000-06 | 190 | 7000 | 1 | 130 | 1.13 | B640 |

* 以上信息基于5.1Bar的供应压力为2-3滴/分钟的油流量，20°C的透平1号油(ISOVG32)油温。
* The above information is based on 5.1Bar supply pressure, the flow of oil drop is 2-3 drops/min, the temperature of Turbine No. 1 oil is 20°C.
* 以上信息基于5.1Bar供应压力和0.3Bar step down
* The above information is based on 5.1Bar supply pressure and 0.3Bar step down
* 接管口径有NPT, PT螺纹可供选择
* NPT,PT port size is optional

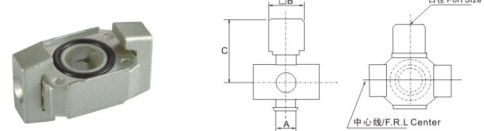
外形尺寸图/Main Dimensions(mm)



| 型号 / Model | 接管口径 / Port Size (G) | A | B | C | D | E | G | H | J | K | L | M | P |
|-------------|----------------------|------|-------|----|----|------|----|----|-----|------|----|-----|------|
| HNEL2000 | 1/8"-1/4" | 40 | 137 | 38 | 50 | 30 | 27 | 22 | 5.4 | 8.4 | 40 | 2.3 | 40 |
| HNEL3000 | 1/4"-3/8" | 57.4 | 154.5 | 38 | 53 | 41 | 40 | 23 | 6.5 | 8 | 53 | 2.3 | 55 |
| HNEL4000 | 3/8"-1/2" | 74 | 185.5 | 41 | 70 | 50 | 54 | 26 | 8.5 | 10.5 | 70 | 2.3 | 72.5 |
| HNEL4000-06 | 3/4 | 76.5 | 185.5 | 39 | 70 | 50 | 54 | 25 | 8.5 | 10.5 | 70 | 2.3 | 72.5 |
| HNEL5000 | 3/4"-1" | 90 | 262.5 | 45 | 90 | 66.5 | 66 | 35 | 11 | 13 | 90 | 3.2 | 90 |

配件/Accessories

T型隔板/T-Type Spacer



| 型号 / Model | 接管口径 / Port Size (G) | A | B | C | 使用型号 / Applicable Model |
|------------|----------------------|----|----|------|-------------------------|
| Y21-01 | G1/8 | 10 | 19 | 29 | JAC2000 |
| Y21-02 | G1/4 | 11 | 19 | 33 | JAC3000 |
| Y31-01 | G1/8 | 14 | 24 | 39 | JAC4000 |
| Y31-02 | G1/4 | 15 | 30 | 50.5 | JAC5000 |
| Y41-02 | G1/4 | | | | |
| Y41-03 | G3/8 | | | | |
| Y61-03 | G3/8 | | | | |
| Y61-04 | G1/2 | | | | |

L型支架/L-Type Bracket

带L型支架中间块/Spacer with L-Type Bracket



| L型支架 / L-Type Bracket | 带L型支架中间块 / Spacer with L-Type Bracket | A | B | C | D | E | F | G | R | L | 使用型号 / Applicable Model |
|-----------------------|---------------------------------------|----|----|-----|---|------|------|----|------|----|-------------------------|
| B110L | Y10L | 20 | 12 | 4.5 | 3 | 25 | 5 | 8 | 2.25 | 27 | JAC1000 |
| B210L | Y20L | 24 | 15 | 5.5 | 3 | 30 | 5 | 10 | 2.75 | 33 | JAC2000 |
| B310L | Y30L | 35 | 16 | 7 | 4 | 41 | 7 | 11 | 3.5 | 45 | JAC2500-3000 |
| B410L | Y40L | 40 | 22 | 9 | 4 | 50 | 7 | 14 | 4.5 | 50 | JAC4000 |
| B510L | Y50L | 40 | 22 | 9 | 4 | 50 | 7 | 14 | 4.5 | 50 | JAC4000-06 |
| B610L | Y60L | 50 | 23 | 12 | 4 | 69.8 | 10.5 | 15 | 6 | 63 | JAC5000 |

T型支架/T-Type Bracket

带T型支架中间块/Spacer with T-Type Bracket

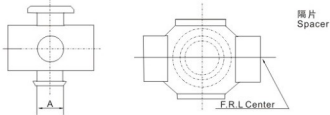


| L型支架 / L-Type Bracket | 带L型支架中间块 / Spacer with L-Type Bracket | A | B | C | D | E | F | G | H | R | L | 使用型号 / Applicable Model |
|-----------------------|---------------------------------------|----|----|-----|---|------|------|----|-----|------|----|-------------------------|
| B110T | Y10T | 20 | 12 | 4.5 | 3 | 25 | 5 | 8 | 40 | 2.25 | 27 | JAC1010 |
| B210T | Y20T | 24 | 15 | 5.5 | 3 | 30 | 5 | 10 | 48 | 2.75 | 33 | JAC2010 |
| B310T | Y30T | 35 | 16 | 7 | 4 | 41 | 7 | 11 | 70 | 3.5 | 45 | JAC3010 |
| B410T | Y40T | 40 | 22 | 9 | 4 | 50 | 7 | 14 | 80 | 4.5 | 50 | JAC4000 |
| B510T | Y50T | 40 | 22 | 9 | 4 | 50 | 7 | 14 | 80 | 4.5 | 50 | JAC4010-06 |
| B610T | Y60T | 50 | 23 | 12 | 4 | 69.8 | 10.5 | 15 | 100 | 6 | 63 | JAC5010 |



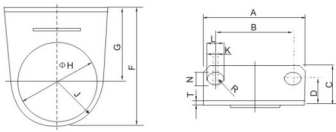
配件/Accessories

● Y型中间块/Y-Type Spacer



| 型号/Model | A | 使用型号 Applicable Model |
|----------|----|--------------------------|
| Y10 | 8 | JAC1000 |
| Y20 | 10 | JAC2000 |
| Y30 | 11 | JAC2500-3000 |
| Y40 | 14 | JAC4000 |
| Y50 | 14 | JAC4000-06 |
| Y60 | 15 | JAC5000 |

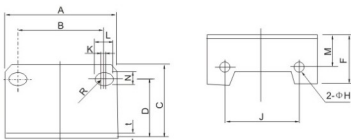
● AR/AW支架/AR/AW-Type Bracket



AR/AW 支架
Bracket for AR/AW

| AR/AW 型号/Model | A | B | C | D | F | G | ΦH | J | K | L | N | R | T | 使用型号/Applicable Model |
|-------------------|----|----|------|----|------|------|------|------|-----|------|-----|------|-----|-------------------------------|
| B120 | 40 | 28 | 17 | 11 | 37.8 | 25 | 20.5 | 12.3 | 2 | 6.5 | 4.5 | 2.25 | 2 | JAR/JAW1000 |
| B220 | 55 | 34 | 25 | 19 | 50 | 30 | 33.5 | 20 | 10 | 15.4 | 5.4 | 2.7 | 2.3 | JAR/JAW2000/JAR2500 |
| B320 | 53 | 40 | 21.5 | 14 | 64 | 39 | 42.5 | 25 | 1.5 | 9 | 6.5 | 3.25 | 2.3 | JAR/JAW3000 |
| B420 | 70 | 54 | 27 | 18 | 79.2 | 49.2 | 52.5 | 30 | 2 | 10.5 | 8.5 | 4.26 | 2.3 | JAR/JAW4000-5000_JAW4000-5000 |

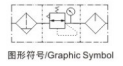
● AL/AF支架/AL/AF-Type Bracket



AL/AF 支架
Bracket for AL/AF

| 型号/Model | A | B | C | D | F | G | ΦH | J | K | L | N | R | T | 安装螺钉 Fixing screw | 使用型号 Applicable Model |
|----------|----|----|----|----|------|-----|----|-----|------|----|-----|------|-----|----------------------|--------------------------|
| B240 | 40 | 27 | 33 | 27 | 18 | 4.5 | 26 | 3 | 8.4 | 14 | 5.4 | 2.7 | 2.3 | M4×8 | JAF/JAL2000 |
| B340 | 53 | 40 | 39 | 32 | 22.5 | 4.5 | 35 | 1.5 | 8 | 19 | 6.5 | 3.25 | 2.3 | M4×8 | JAF/JAL3000 |
| B440 | 70 | 54 | 47 | 38 | 31.5 | 5.5 | 47 | 2 | 10.5 | 20 | 8.5 | 4.25 | 2.3 | M5×10 | JAF/JAL4000 |
| B540 | 70 | 54 | 47 | 38 | 27.5 | 5.5 | 47 | 2 | 10.5 | 20 | 8.5 | 4.25 | 2.3 | M5×10 | JAF/JAL4000-06 |
| B640 | 90 | 66 | 64 | 52 | 43 | 6.5 | 60 | 2 | 13 | 29 | 11 | 5.5 | 3.2 | M6×10 | JAF/JAL5000 |

AC/BC系列气源处理件(三联件) / AC/BC Series Air Source Treatment Unit(F.R.L Combination)



● 订购码/Ordering Code

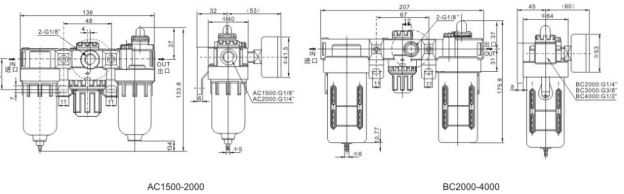
| A | C | 2000 | □ |
|--|--|---|---|
| A: 偏小尺寸, 无保护罩 B: 偏大尺寸, 有保护罩 A: Smaller body size, without bowl guard B: Bigger body size, with bowl guard | 过滤器+调压器+油雾器 Filter + Regulator + Lubricator | 接管口径 Port size 1500:1/8" 2000:1/4" 3000:3/8" 4000:1/2" | 空白: 手动排水型 D: 自动排水型(AB系列水杯加长) Blank: Manual drain type D: Auto drain type (Longer water cup for AB series) |

* AB系列气源处理件, 过滤器+调压器+油雾器, 1/4"接管口径, 型号: AC2000
* Abseries, Filter + Regulator + Lubricator, port size: 1/4", model: AC2000

● 规格/Specifications

| 型号/Model | AC1500 | AC2000 | BC2000 | BC3000 | BC4000 |
|---------------------------------|---|----------------------------|-----------------------------|----------------------------|----------------------------|
| 工作介质/Working medium | | | 空气/Air | | |
| 接管口径 /Port size | G1/8 | G1/4 | G1/4 | G3/8 | G1/2 |
| 滤芯精度/Filter precision | | | 25 μm (5.40 μm is optional) | | |
| 调节压力范围/Adjusting pressure range | | | 0.05-0.85Mpa | | |
| 最大可调节力/Max. Adjusting pressure | | | 0.95Mpa | | |
| 保证耐压力/Guaranteed pressure | | | 1.5Mpa | | |
| 工作温度/Working temperature | | | 5-60℃ | | |
| 滤水杯容量/Filter bowl capacity | 15(CC) | | | 60(CC) | |
| 储油杯容量/Lubricator bowl capacity | 25(CC) | | | 90(CC) | |
| 建议用油/Recommended Oil | ISO VG32或同级别油/ISO VG32 or equivalent Oil | | | | |
| 重量/Weight | 0.7kg | | | 0.9kg | |
| 构成元件 Components | 过滤器/Filter 调压器/Regulator 油雾器/Lubricator | AF1500 AR1500 AL1500 | AF2000 AR2000 AL2000 | BF2000 BR2000 BL2000 | BF3000 BR3000 BL3000 |

● 外形尺寸图/Main Dimensions(mm)





AFC, BFC系列气源处理件 (二联件) / AFC, BFC Series Air Source Treatment Unit (FR.L Combination)



订购码/Ordering Code

A — **FC** — **2000** — **□**

A: 最小尺寸, 无保护罩
B: 最大尺寸, 有保护罩
A: Smaller body size, without bowl guard
B: Bigger body size, with bowl guard

过滤器+调压器+油雾器
Filter + Regulator + Lubricator

接管口径
Port size
1500:1/8"
2000:1/4"
3000:3/8"
4000:1/2"

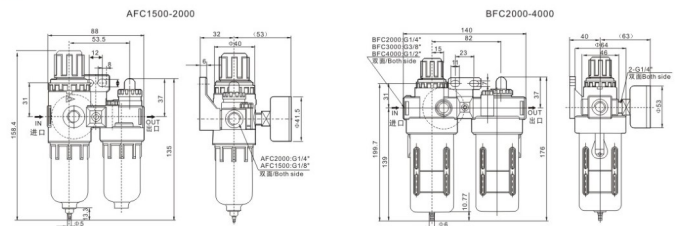
空白手动排水型
D: 自动排水型(AB系列水杯加长)
Blank Manual drain type
D: Auto drain type
(Longer water cup for AB series)

*AB系列气源处理件: 过滤器+调压器+油雾器, 1/4"接管口径, 型号: AFC2000
*AB series: Filter + Regulator + Lubricator, port size: 1/4", model: AFC2000

规格/Specifications

| 型号/Model | AFC1500 | AFC2000 | BFC2000 | BFC3000 | BFC4000 |
|---------------------------------|---|-----------------------------|---|---|---|
| 工作介质/Working medium | 空气/Air | | | | |
| 接管口径/Port size | G1/8 | G1/4 | G1/4 | G3/8 | G1/2 |
| 滤芯精度/Filter precision | 25 μm (5.40 μm is optional) | | | | |
| 调节压力范围/Adjusting pressure range | 0.05~0.85Mpa | | | | |
| 最大可调节压力/Max. Adjusting pressure | 0.95Mpa | | | | |
| 保证耐压力/Guaranteed pressure | 1.5Mpa | | | | |
| 工作温度/Working temperature | 5~60°C | | | | |
| 滤水杯容量/Filter bowl capacity | 15(CC) | | | 60(CC) | |
| 储油杯容量/Lubricator bowl capacity | 25(CC) | | | 90(CC) | |
| 建议润滑油/Recommended Oil | ISO VG32或同级别用油/ISO VG32 or equivalent Oil | | | | |
| 重量/Weight | 0.7kg | | | 0.9kg | |
| 构成件/Components | 过滤器/Filter 调压器/Regulator | 过滤器/Filter 调压器/Regulator | 过滤器/Filter 调压器/Regulator 油雾器/Lubricator | 过滤器/Filter 调压器/Regulator 油雾器/Lubricator | 过滤器/Filter 调压器/Regulator 油雾器/Lubricator |

外形尺寸图/Main Dimensions(mm)



AFR, BFR系列过滤减压阀/AFR, BFR Series Filter & Regulator



订购码/Ordering Code

A — **FR** — **2000** — **□**

A: 最小尺寸, 无保护罩
B: 最大尺寸, 有保护罩
A: Smaller body size, without bowl guard
B: Bigger body size, with bowl guard

过滤器+调压器
Filter + Regulator

接管口径
Port size
1500:1/8"
2000:1/4"
3000:3/8"
4000:1/2"

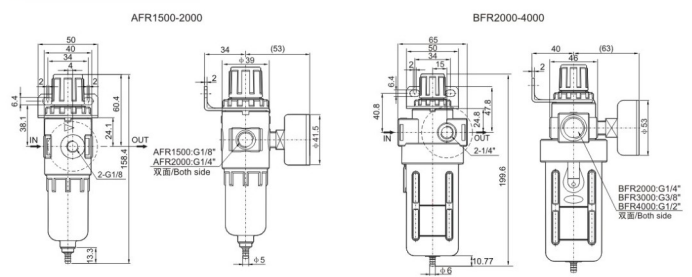
空白, 手动排水型
D: 自动排水型(AB系列水杯加长)
Blank Manual drain type
D: Auto drain type
(Longer water cup for AB series)

*AB系列气源处理件: 过滤器+调压器+油雾器, 1/4"接管口径, 型号: AFR2000
*AB series: Filter + Regulator + Lubricator, port size: 1/4", model: AFR2000

规格/Specifications

| 型号/Model | AFR1500 | AFR2000 | BFR2000 | BFR3000 | BFR4000 |
|---------------------------------|-----------------------------|---------|---------|---------|---------|
| 工作介质/Working medium | 空气/Air | | | | |
| 接管口径/Port size | G1/8 | G1/4 | G1/4 | G3/8 | G1/2 |
| 滤芯精度/Filter precision | 40 μm (5.50 μm is optional) | | | | |
| 调节压力范围/Adjusting pressure range | 0.05~0.85Mpa | | | | |
| 最大可调节压力/Max. Adjusting pressure | 0.95Mpa | | | | |
| 保证耐压力/Guaranteed pressure | 1.5Mpa | | | | |
| 工作温度/Working temperature | 5~60°C | | | | |
| 滤水杯容量/Filter bowl capacity | 15(CC) | | | 60(CC) | |
| 重量/Weight | 0.7kg | | | 0.9kg | |

外形尺寸图/Main Dimensions(mm)





AF、BF系列过滤器/AF、BF Series Air Filter



订购码/Ordering Code

A — **F** — **2000** — **□**

A: 缩小尺寸, 无保护罩
B: 放大尺寸, 有保护罩
A: Smaller body size, without bowl guard
B: Bigger body size, with bowl guard

F: 过滤器
Filter

2000: 接管口径
Port size
1500: 1/8"
2000: 1/4"
3000: 3/8"
4000: 1/2"

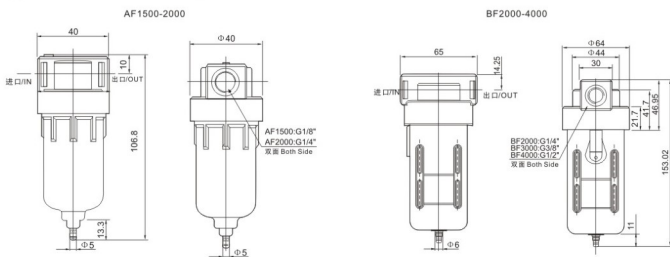
□: 空白, 手动排水型
Blank/Manual drain type
D: 自动排水型
Auto drain type
(Longer water cup for AB series)

*AB系列气源处理件, 过滤器, 1/4"接管口径, 型号: AF2000
*AB series Filter, port size: 1/4", model: AF2000

规格/Specifications

| 型号/Model | AF1500 | AF2000 | BF2000 | BF3000 | BF4000 |
|----------------------------|----------------------------------|--------|--------|----------|--------|
| 工作介质/Working medium | 空气/Air | | | | |
| 接管口径/Port size | G1/8 | G1/4 | G1/4 | G3/8 | G1/2 |
| 滤芯精度/Filter precision | 25 μm (5.50 μm is optional) | | | | |
| 工作压力/Working pressure | 0.95Mpa | | | | |
| 保证压力/Guaranteed pressure | 1.5Mpa | | | | |
| 工作温度/Working temperature | 5~60℃ | | | | |
| 滤水杯容量/Filter bowl capacity | 15(CC) | | | 60(CC) | |
| 重量/Weight | 0.14(KG) | | | 0.33(KG) | |
| 壳体/Body | 铝合金/Aluminum Die-casting Forming | | | | |
| 材料/Material | 容器/Container Cup | 塑料/PE | | | 铁/Iron |
| | 保护套/Protective Cover | | | | |

外形尺寸图/Main Dimensions(mm)



AL、BL系列油雾器/AL、BL Series Lubricator



订购码/Ordering Code

A — **L** — **2000**

A: 缩小尺寸, 无保护罩
B: 放大尺寸, 有保护罩
A: Smaller body size, without bowl guard
B: Bigger body size, with bowl guard

L: 油雾器
Lubricator

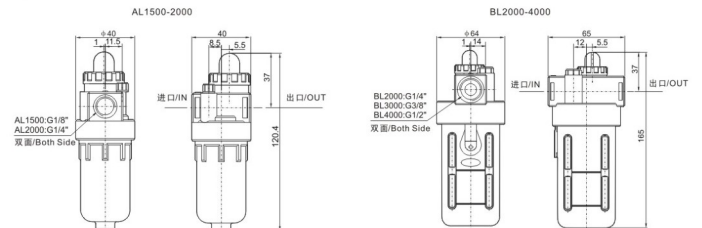
2000: 接管口径
Port size
1500: 1/8"
2000: 1/4"
3000: 3/8"
4000: 1/2"

*A系列气源处理件, 油雾器, 1/4"接管口径, 型号: AL2000
*A series Lubricator, Port Size: 1/4", model: AL2000

规格/Specifications

| 型号/Model | AL1500 | AL2000 | BL2000 | BL3000 | BL4000 |
|--------------------------------|---|--------|--------|--------|--------|
| 工作介质/Working medium | 空气/Air | | | | |
| 接管口径/Port size | G1/8 | G1/4 | G1/4 | G3/8 | G1/2 |
| 保证压力/Guaranteed pressure | 1.5MPa | | | | |
| 工作温度/Working temperature | 5~60℃ | | | | |
| 给油杯容量/Lubricator bowl capacity | 25(CC) | | | 90(CC) | |
| 建议用油/Recommended Oil | ISO VG32或等效油/ISO VG32 or equivalent Oil | | | | |
| 重量/Weight | 0.17KG | | | 0.25KG | |
| 壳体/Body | 铝合金/Aluminum Die-casting Forming | | | | |
| 材料/Material | 容器/Container Cup | 塑料/PE | | | 铁/Iron |
| | 保护套/Protective Cover | | | | |

外形尺寸图/Main Dimensions(mm)





AR, BR系列减压阀/AR, BR Series Regulator



订购码/Ordering Code

A — **R** — **2000**

A: 最小尺寸, 无保护罩
B: 最大尺寸, 有保护罩
A: Smaller body size, without bowl guard
B: Bigger body size, with bowl guard

Regulator
Regulator

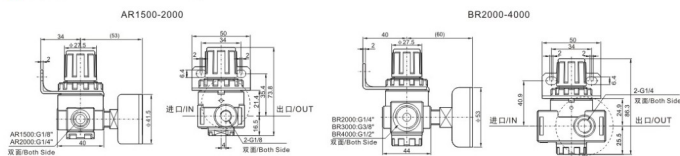
接管口径
Port size
1500: 1/8"
2000: 1/4"
3000: 3/8"
4000: 1/2"

*A系列气源处理件, 减压阀, 1/4"接管口径, 型号: AR2000
*A-series regulator, port size: 1/4", model: AR2000

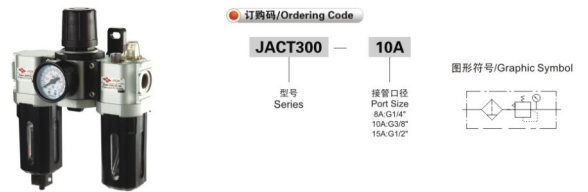
规格/Specifications

| 型号/Model | AR1500 | AR2000 | BR2000 | BR3000 | BR4000 |
|---------------------------------|----------------------------------|--------|--------|--------|--------|
| 工作介质/Working medium | 空气/Air | | | | |
| 接管口径/Port size | G1/8 | G1/4 | G1/4 | G3/8 | G1/2 |
| 调节压力范围/Adjusting pressure range | 0.05~0.85Mpa | | | | |
| 最大可调节压力/Max. Adjusting pressure | 0.95Mpa | | | | |
| 工作压力/Working pressure | 0~0.95Mpa | | | | |
| 保证压力/Guaranteed pressure | 1.5Mpa | | | | |
| 工作温度/Working temperature | 5~60℃ | | | | |
| 重量/Weight | 0.2kg | | 0.23kg | | |
| 材料/Material of Body | 铝合金/Aluminum Die-casting Forming | | | | |

外形尺寸图/Main Dimensions(mm)



JACT300 系列空气调理组合(三点组合)/JACT300 Series Air Source Treatment Unit(Three-point Combination)



订购码/Ordering Code

JACT300 — **10A**

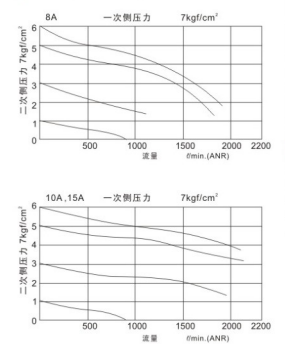
型号
Series

接管口径
Port Size
8A: G1/4"
10A: G3/8"
15A: G1/2"

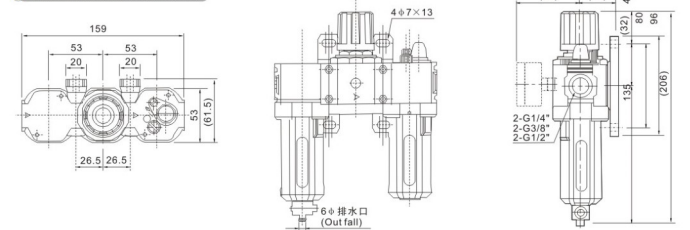
规格/Specifications

| 型号 / Model | JACT300 | | |
|------------------------------------|--------------------------------|----------|----------|
| 接管口径代号 Port Size Code | 8A | 10A | 15A |
| 接管口径尺寸 Port Size Dimension | G1/4" | G3/8" | G1/2" |
| 使用压力范围 Operating Pressure Range | 0~0.99MPa | | |
| 耐压力 Pressure Resistance | 1.5MPa | | |
| 设定压力范围 Pressure Range | 0.05~0.85MPa | | |
| 使用流体 Operating Fluid | 空气 / Air | | |
| 环境温度 Ambient Temperature | 5~60℃ | | |
| 过渡精度 Filter Precision | 5 μm | | |
| 油箱贮油量 Capacity Of Oil Feed Cup | 55 c.c | | |
| 油滴下最小空气流量 Min. Air Flow of Oil | 50 l/min | 60 l/min | 60 l/min |
| 建议润滑油 Recommended Oil Use | 轮机油 Machine Oil SG-VG32 | | |
| 组件 Assembly | JAF300, JAR300, JAL300 | | |
| 附属配件 Accessory | 压力表/支架 (Pressure Gauge/braket) | | |

流量特性图/Flow Chart



外形尺寸图/Main Dimensions(mm)





JACP300 系列空气调理组合(二点组合) / JACP300 Series Air Source Treatment Unit(Two-point Combination)



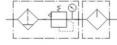
● 订购码/Ordering Code

JACP300 — **10A**

型号 Series

接管口径 Port Size
8A-G1/4"
10A-G3/8"
15A-G1/2"

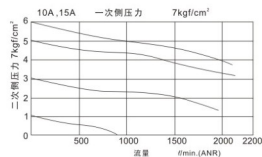
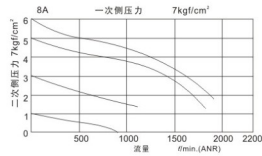
图形符号/Graphic Symbol



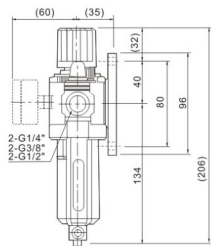
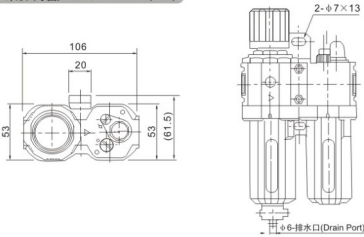
● 规格/Specifications

| 型号 / Model | JACP300 | | |
|------------------------------------|-------------------------------|----------|----------|
| 接管口径代号 Port Size Code | 8A | 10A | 15A |
| 接管口径尺寸 Port Size Dimension | G1/4" | G3/8" | G1/2" |
| 使用压力范围 Operating Pressure Range | 0~0.99MPa | | |
| 耐压力 Pressure Resistance | 1.5MPa | | |
| 设定压力范围 Pressure Range | 0.05~0.85MPa | | |
| 使用流体 Operating Fluid | 空气 / Air | | |
| 周围温度 Ambient Temperature | 5~60℃ | | |
| 过滤精度 Filter Precision | 5μm | | |
| 油杯贮油量 Capacity Of Oil Feed Cup | 55 c.c | | |
| 油滴下最小空气流量 Min. Air Flow of Oil | 50 l/min | 60 l/min | 60 l/min |
| 建议润滑油 Recommended Oil Use | 轮机油/Machine Oil SO-VG32 | | |
| 组件 Assembly | XAFR300,XAL300 | | |
| 附属配件 Accessory | 压力表/支架(Pressure Gauge/braket) | | |

● 流量特性图/Flow Chart



● 外形尺寸图/Main Dimensions(mm)



H 系列高压减压阀(过滤器) / H Series High Pressure Regulator (Filter)



QSLH-15 QTYH-15

● 订购码/Ordering Code

QTYH — **15** — **QSLH** — **15**

高压减压阀 High pressure Regulator

接管口径 Port Size
8-G1/4"
15-G1/2"
20-G3/4"
25-G1"

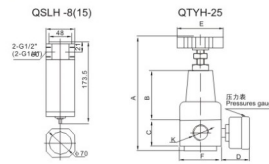
高压分水过滤器 High Pressure Filter

接管口径 Port Size
8-G1/4"
15-G1/2"
20-G3/4"
25-G1"

图形符号/Graphic Symbol



● 外形尺寸图/Main Dimensions(mm)



● 规格/Specifications

| | |
|---|------------|
| 最高使用压力 / Max. pressure | 3.5MPa |
| 调压范围/Pressure Regulating Range | 0.5~3.5MPa |
| 环境及流体温度 / Ambient and Fluid Temperature | -5~50℃ |

| 型号 Model | 接管口径/Port Size | A | B | C | D | E | F |
|----------|----------------|-----|----|----|----|----|-------|
| QTYH-8 | G1/4" | 150 | 64 | 34 | 36 | 60 | 55×55 |
| QTYH-15 | G1/2" | 150 | 64 | 34 | 36 | 60 | 55×55 |
| QTYH-20 | G3/4" | 235 | 91 | 45 | 32 | 95 | 80×80 |
| QTYH-25 | G1" | 235 | 91 | 45 | 32 | 94 | 80×80 |

JAD402 系列自动排水器 / JAD402 Series Auto Drain



图形符号/Graphic Symbol



● 用途事项/Range of Application:

常用于自动排除管道低处、冷冻式空气干燥机、油水分离器、贮气罐及各种空气过滤器底部等处的积水。可安装在不便进行、人工排放污水的地方，如高处、低处、狭缝处，特别是安装在用气量较大、放水次数较频繁的地方，可防止人工排水时造成压缩空气罐内积水重新污染。

This product often applies to auto remove the see per at the lower places of piping, frozen type air drying machine, Oil separator, air storage tanks and the bottom of various air filters. It can be installed in the places inconvenient for manual discharge of sewage, such as higher, lower and narrow places, especially there slarge consumption of air or frequent water drains it can prevent the compressed air being re-polluted by con-dense water resulting from neglect of manual drain.

● 特性/Features:

自动排水(Auto Drain)/排气排水(Air Shut-off Drain)/手动排水(Manual Drain)/

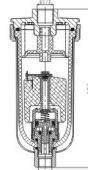
水杯配有金属保护罩(The water cup is provided with metal protective cover)

● 注意事项/Points for Attention:

使用时，必须垂直位置安装，且使排水口朝下。

When using, the drainer should be installed vertically the drain port facing down

● 外形尺寸图/Main Dimensions(mm)



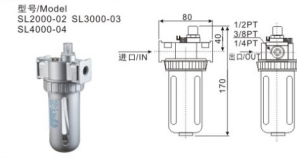
● 规格/Specifications

| 型号 Model | JAD402-02 | JAD402-03 | JAD402-04 |
|---------------------------------------|------------------------|-----------|-----------|
| 保证耐压力/Ensured Pressure Resistance | 1.5MPa | | |
| 动作压力/Operating Pressure | 0.15MPa~1.00MPa | | |
| 环境及流体温度/Ambient and Fluid Temperature | 5~60℃ | | |
| 接管口径/Port Size | G1/4" | G3/8" | G1/2" |
| 排水口径/Drain Bore | G1/8" | | |
| 排水状态/Drain Status | 常开型 / Normal Open type | | |
| 工作介质/Working Medium | 压缩空气 / Compressed Air | | |

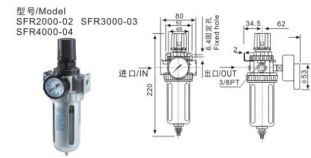


S、JN系列气源处理件/S、JN Series Air Source Treatment Unit

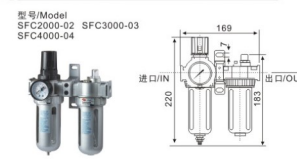
油雾器 Lubricator



过滤器+调压阀 Filter + Regulator



过滤器+调压阀+油雾器 Filter + Regulator+Lubricator



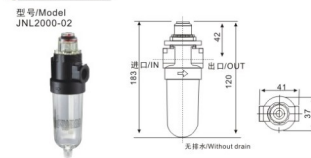
过滤器 Filter



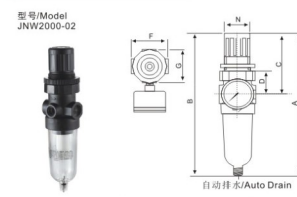
调压阀 Regulator



油雾器 Lubricator



过滤器+调压阀 Filter + Regulator



过滤器+调压阀+油雾器 Filter + Regulator+Lubricator



| 规格 Specs | 排量 Discharge | A | B | C | D | F | G | 面板孔 Panel hole | 面板厚度 Panel depth | Kg |
|-------------|------------------|-----|-----|----|----|----|----|-------------------|---------------------|------|
| 1/8 | 自动/ Automatic | 160 | 210 | 68 | 28 | 41 | 38 | 30 | 0-6 | 0.26 |
| 1/4 | 手动/ Manual | 164 | 214 | 68 | 28 | 41 | 38 | 30 | 0-6 | 0.26 |

※面板安装用Ø1mm长
螺钉，5/32"直径
Use Ø1mm length and
5/32" screw to install

压力表/pressure gauge

| 图片/Photo | 产品描述/Description of goods | 型号/Model | 可选附件/Optional |
|----------|--|----------|--|
| | 铁壳，塑面，不充油表，径向 Steel shell, Plastic lens, bottom connection | JY801 | 1.5"-6" -F 带法兰 -U WITH FLANGE -R 带塞形夹 -R RHOMBUS CLAMP |
| | 铁壳，塑面，不充油表，轴向 Steel shell, Plastic lens, back connection | JY802 | |
| | 塑壳，塑面，不充油表，轴向 Plastic shell, Plastic lens, back connection | JY803 | |
| | 塑壳，塑面，不充油表，径向 Plastic shell, Plastic lens, bottom connection | JY804 | 1.5"-6" |
| | 不锈钢304壳，不充油表，轴向 S.S 304 shell, back connection, without oil | JY805 | 1.5"-6" -F 带法兰 -U 带U型夹 -U WITH U CLAMP -R 带塞形夹 -R RHOMBUS CLAMP |
| | 不锈钢304壳，不充油表，径向 S.S 304 shell, bottom connection, without oil | JY806 | |
| | 全不锈钢壳，不充油表，径向 Full s.s bottom connection, without oil | JY807 | 1.5"-6" -F 带法兰 -U 带U型夹 -U WITH U CLAMP -R 带塞形夹 -R RHOMBUS CLAMP |
| | 全不锈钢壳，不充油表，轴向 Full s.s back connection, without oil | JY808 | |
| | 不锈钢304壳，充油表，径向 S.S 304 shell, bottom connection, with oil | JY809 | 1.5"-6" -F 带法兰 -U 带U型夹 -U WITH U CLAMP -R 带塞形夹 -R RHOMBUS CLAMP |
| | 不锈钢304壳，充油表，轴向 S.S 304 shell, back connection, with oil | JY810 | |
| | 全不锈钢壳，充油表，径向 Full s.s bottom connection, with oil | JY811 | 1.5"-6" -F 带法兰 -U 带U型夹 -U WITH U CLAMP -R 带塞形夹 -R RHOMBUS CLAMP |
| | 全不锈钢壳，充油表，轴向 Full s.s back connection, with oil | JY812 | |